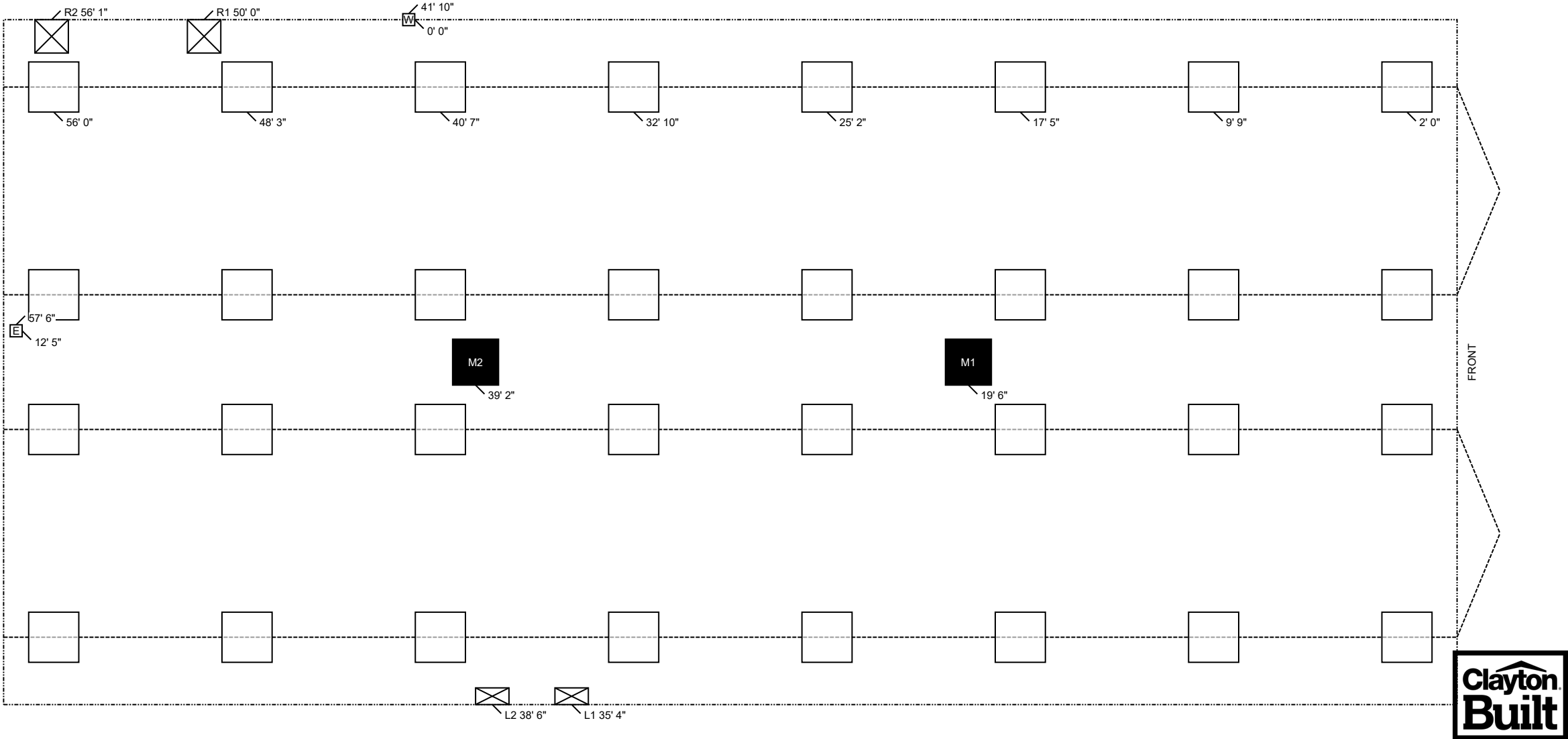


ClaytonGO: Foundation Plan Summary

Order Number:	N/A	Home Width:	27 FT 4 IN	Roof Load:	20 PSF	Use this QR Code to access DAPIA approved tables referenced within this design. Hover your iPhone camera over the code. For Android and other devices, download a QR Code reader. Questions? Email sitecompletionq&a@claytonhomes.com
Model Number:	941-VIS28583A	Home Length:	58 FT 0 IN	Soil Bearing Cap:	1500 PSF	
Home Building Facility:	941	Outrigger Length (O.R.):	32.25 IN	Min. I-Beam Size:	8 IN	
		Chassis Spacing:	99.5 IN	Calculated Eave/Overhang:	12 IN	



TABLE 1: FRAME PIERS	TABLE 2: EXTERIOR PIERS	TABLE 3: MARRIAGE WALL PIERS
<div></div> Pier Spacing TYP. 7 FT 9 IN MAX. 8 FT 0 IN (Table 6b)	<div></div> Pier ID L1, L2 R1, R2 (Table 6d)	<div></div> Pier ID M1, M2 (Table 5b)
Pier Configuration Single stacked	Pier Configuration Single stacked	Pier Configuration Single stacked
Footer Size 24 IN x 24 IN x 8 IN 24 IN x 24 IN x 8 IN	Footer Size 8 IN x 16 IN x 6 IN 16 IN x 16 IN x 6 IN	Footer Size 22 IN x 22 IN x 7 IN



ClaytonGO: Foundation Plan Summary

Order Number:	N/A	Home Width:	27 FT 4 IN	Roof Load:	20 PSF	Use this QR Code to access DAPIA approved tables referenced within this design. Hover your iPhone camera over the code. For Android and other devices, download a QR Code reader. Questions? Email sitecompletionq&a@claytonhomes.com
Model Number:	941-VIS28583A	Home Length:	58 FT 0 IN	Soil Bearing Cap:	1500 PSF	
Home Building Facility:	941	Outrigger Length (O.R.):	32.25 IN	Min. I-Beam Size:	8 IN	
		Chassis Spacing:	99.5 IN	Calculated Eave/Overhang:	12 IN	

UTILITIES		LOCATION	
ID	UTILITY	LEFT	DOWN
E	Elec Entrance	57 FT 6 IN	12 FT 5 IN
W	Water Inlet	41 FT 10 IN	0 FT 0 IN

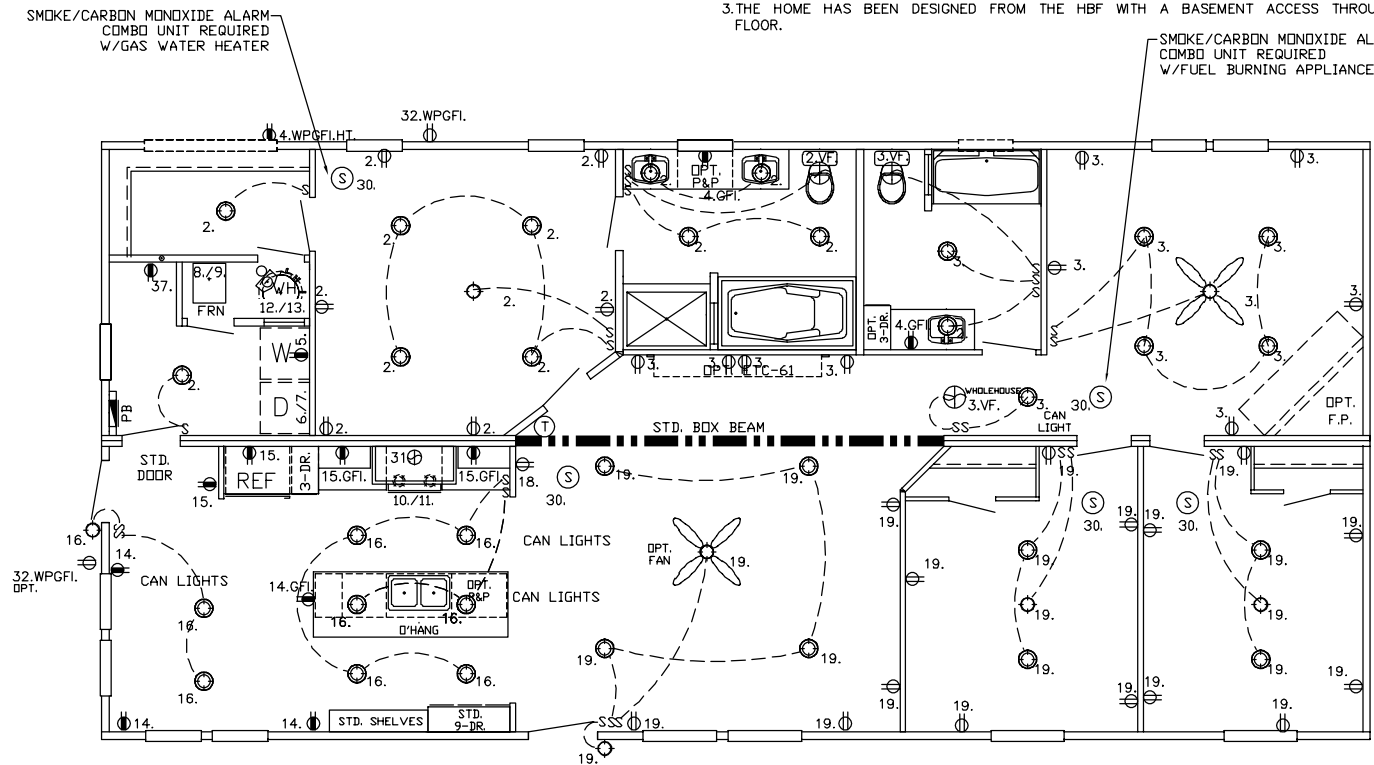
- NOTES:**
1. FROST PROTECTION WILL BE PROVIDED BY PLACING FOOTERS BELOW FROST DEPTH OF 36 INCHES PER (FIGURE 5A) OR FROM LAHJ. Frost depth for interior footers may be taken as half with R5 skirting per (Table 4a) [3285.312(b)]
 2. SIDEWALL PIERS SHALL BE PLACED AT EXTERIOR DOORS AND WINDOW OPENINGS GREATER THAN 48" PER TABLE 2.
 3. ALL FOOTERS WILL BE POURED CONCRETE. ALL SINGLE STACKED PIERS WILL HAVE A MINIMUM FOOTER THICKNESS OF 8 INCHES with footer depth extending below frost depth using 3,000 PSI minimum concrete (table 10A) (table 8)
 4. THIS PIER LAYOUT HAS BEEN DERIVED USING PE SEALED & DAPIA APPROVED INSTALLATION MANUAL AS OUTLINED ABOVE. PLEASE SEE INSTALLATION MANUAL FOR PE SEAL AND DAPIA APPROVAL. (Reference to Clayton Homes DAPIA approved Installation manual) [Reference to Federal Statutes 24 CFR Part 3280, 3285 or 3286]



MP-28.VIS28583A.2

1. THE HOME IS EQUIPPED WITH A FUEL BURNING APPLIANCE INSTALLED AT THE HBF.
2. THE HOME HAS BEEN DESIGNED FROM THE HBF FOR AN ATTACHED GARAGE ADDITION.
3. THE HOME HAS BEEN DESIGNED FROM THE HBF WITH A BASEMENT ACCESS THROUGH THE FLOOR.

SMOKE/CARBON MONOXIDE ALARM
COMBO UNIT REQUIRED
W/FUEL BURNING APPLIANCE

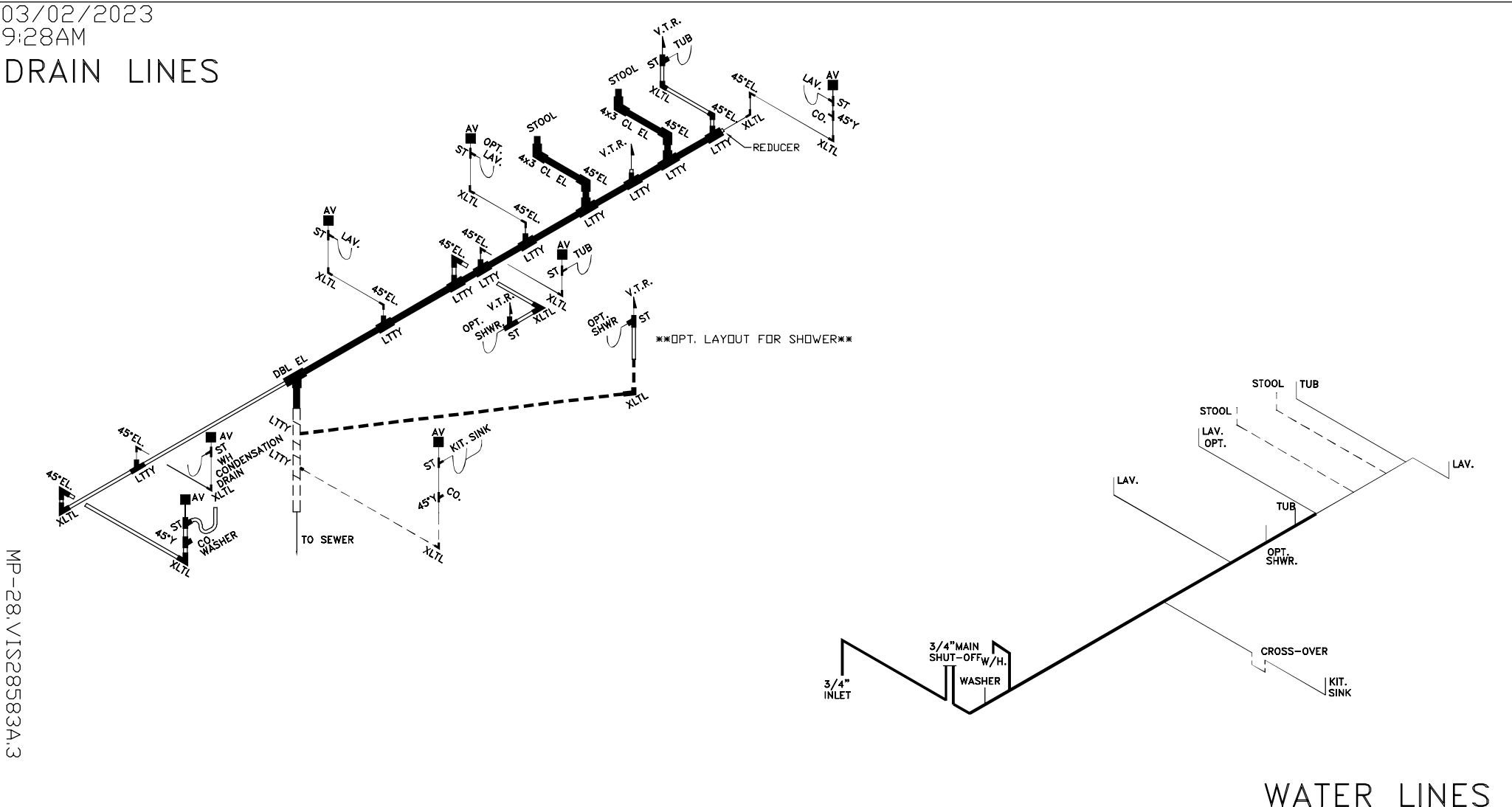


CIRCUIT 37.

SOUTHERN HOMES
MODEL VIS28583A-58-3/28X58

03/02/2023
9:28AM
DRAIN LINES

MP-28, VIS28583A.3



LOOSE PLUMBING FOR FIELD INSTALL		SIZE	3'	3'	3'	3'	3'	3-1.5	3x3x2	3'	3-2	2'	2'	2'	2'	2'	2-1.5	1 1/2	1 1/2	1 1/2	1 1/2	CLEAN	CO.			
ITEM	LTTY	XLTL	COUP	DBL.EL	ST	REDUC	LTTY	PIPE	REDUC	LTTY	XLTL	COUP	PIPE	ST	REDUC	LTTY	XLTL	COUP	PIPE	OUT	PLUG					
QTY.							1	20'							1	1	2	40'								
= 1 1/2"		= 2"		= 3"		FOR DRAIN LINES		DRAIN. & WATER PIPING TYP. NOTE: DWGS. NOT TO SCALE		TYP. NOTES: REFER TO PLN-11 FOR GEN. NOTES SEE DAPIA FOR ANY DETAILS NOT SHOWN ON DRAWINGS.													D:\ACADDBL\UPDATED-MODELS-03-26-2021\VIS28583A.DWG		SOUTHERN HOMES MODEL VIS28583A-58-3/28X58	
= 1 1/2"		= 2"		= 3"		FOR ON-SITE DRAIN LINES		TYP. NOTE FOR DRAIN LINES: STOOL TRAP ARM LESS THAN 6'-0" DASHED LINES ARE FIELD INSTALLED																		
= 1 1/2"		= 3/4"		= COLD ONLY		FOR WATER LINES		TYP. NOTE FOR WATER LINES: COLD AS SHOWN. FOR HOT LINES DELETE STOOL INLET & SHUTOFF																		
																								31.25' MDL 3/4 19.5' MDL 1/2 0.75 VOL (GAL)		