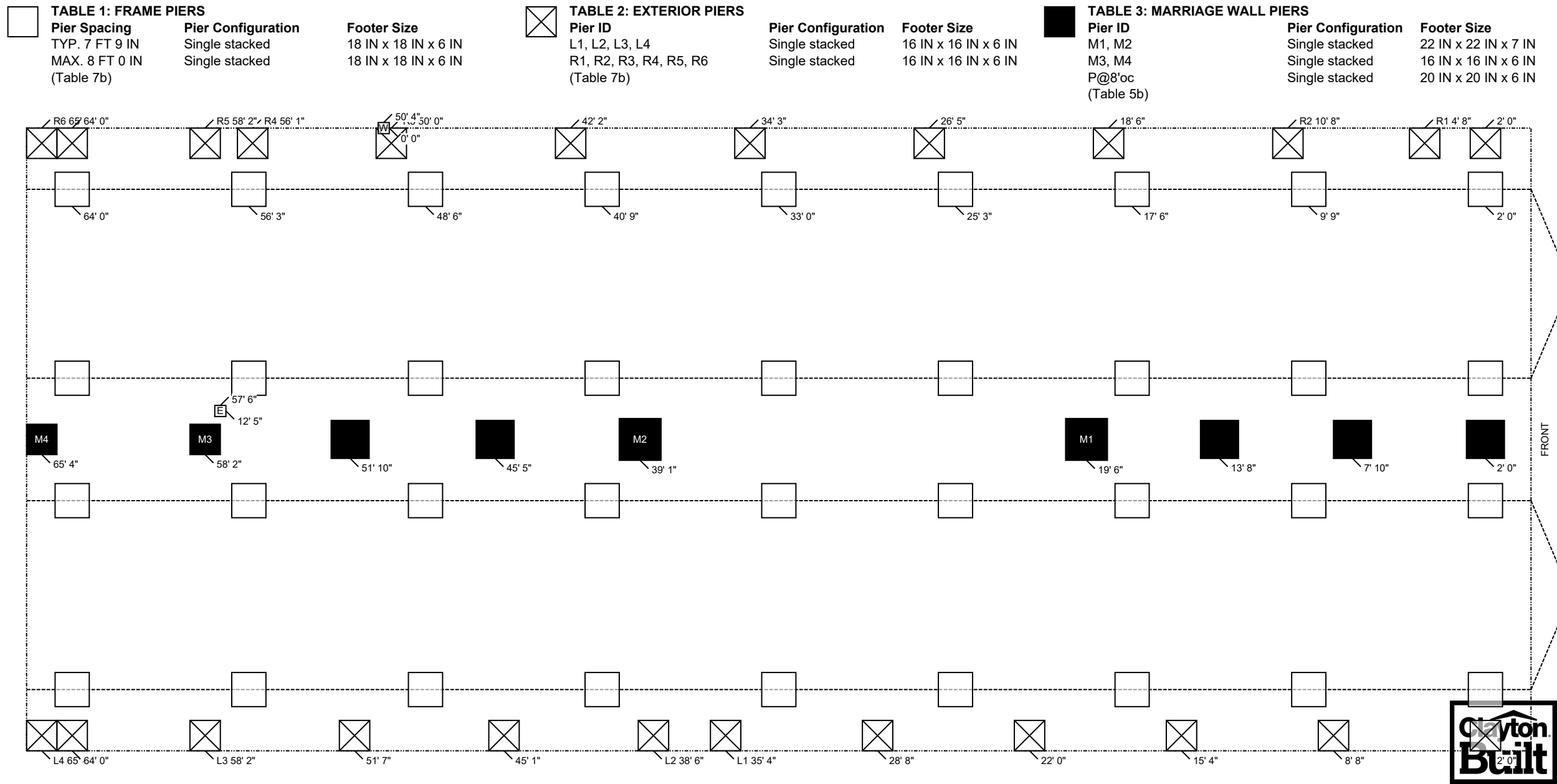



ClaytonGO: Foundation Plan Summary

Order Number:	N/A	Home Width:	27 FT 4 IN	Roof Load:	20 PSF	Use this QR Code to access DAPIA approved tables referenced within this design. Hover your iPhone camera over the code. For Android and other devices, download a QR Code reader. <b>Questions? Email <a href="mailto:sitecompletionq&amp;a@claytonhomes.com">sitecompletionq&amp;a@claytonhomes.com</a></b>
Model Number:	941-VIS28583A-28X66-PORCH	Home Length:	66 FT 0 IN	Soil Bearing Cap:	1500 PSF	
Home Building Facility:	941	Outrigger Length (O.R.):	32.25 IN	Min. I-Beam Size:	10 IN	
		Chassis Spacing:	99.5 IN	Calculated Eave/Overhang:	12 IN	



ClaytonGO: Foundation Plan Summary

Order Number:	N/A	Home Width:	27 FT 4 IN	Roof Load:	20 PSF	Use this QR Code to access DAPIA approved tables referenced within this design. Hover your iPhone camera over the code. For Android and other devices, download a QR Code reader. Questions? Email <a href="mailto:sitecompletionq&amp;a@claytonhomes.com">sitecompletionq&amp;a@claytonhomes.com</a>	
Model Number:	941-VIS28583A-28X66-PORCH	Home Length:	66 FT 0 IN	Soil Bearing Cap:	1500 PSF		
Home Building Facility:	941	Outrigger Length (O.R.):	32.25 IN	Min. I-Beam Size:	10 IN		
		Chassis Spacing:	99.5 IN	Calculated Eave/Overhang:	12 IN		

UTILITIES		LOCATION	
ID	UTILITY	LEFT	DOWN
E	Elec Entrance	57 FT 6 IN	12 FT 5 IN
W	Water Inlet	50 FT 4 IN	0 FT 0 IN

- NOTES:**
- 1. FROST PROTECTION WILL BE PROVIDED BY PLACING FOOTERS BELOW FROST DEPTH OF 36 INCHES PER (FIGURE 5A) OR FROM LAHJ. Frost depth for interior footers may be taken as half with R5 skirting per (Table 4a) [3285.312(b)]
  - 2. PLACE SUPPORTS AT ALL EXTERIOR OPENINGS & PERIMETER BLOCK ALONG EXTERIOR SIDEWALLS (P), AT 96 INCH ON CENTER. & ALONG MARRIAGE WALL(S) AT 96 INCHES ON CENTER.
  - 3. ALL FOOTERS WILL BE POURED CONCRETE. ALL SINGLE STACKED PIERS WILL HAVE A MINIMUM FOOTER THICKNESS OF 7 INCHES with footer depth extending below frost depth using 3,000 PSI minimum concrete (table 10A) (table 8)
  - 4. THIS PIER LAYOUT HAS BEEN DERIVED USING PE SEALED & DAPIA APPROVED INSTALLATION MANUAL AS OUTLINED ABOVE. PLEASE SEE INSTALLATION MANUAL FOR PE SEAL AND DAPIA APPROVAL. (Reference to Clayton Homes DAPIA approved Installation manual) [Reference to Federal Statutes 24 CFR Part 3280, 3285 or 3286]

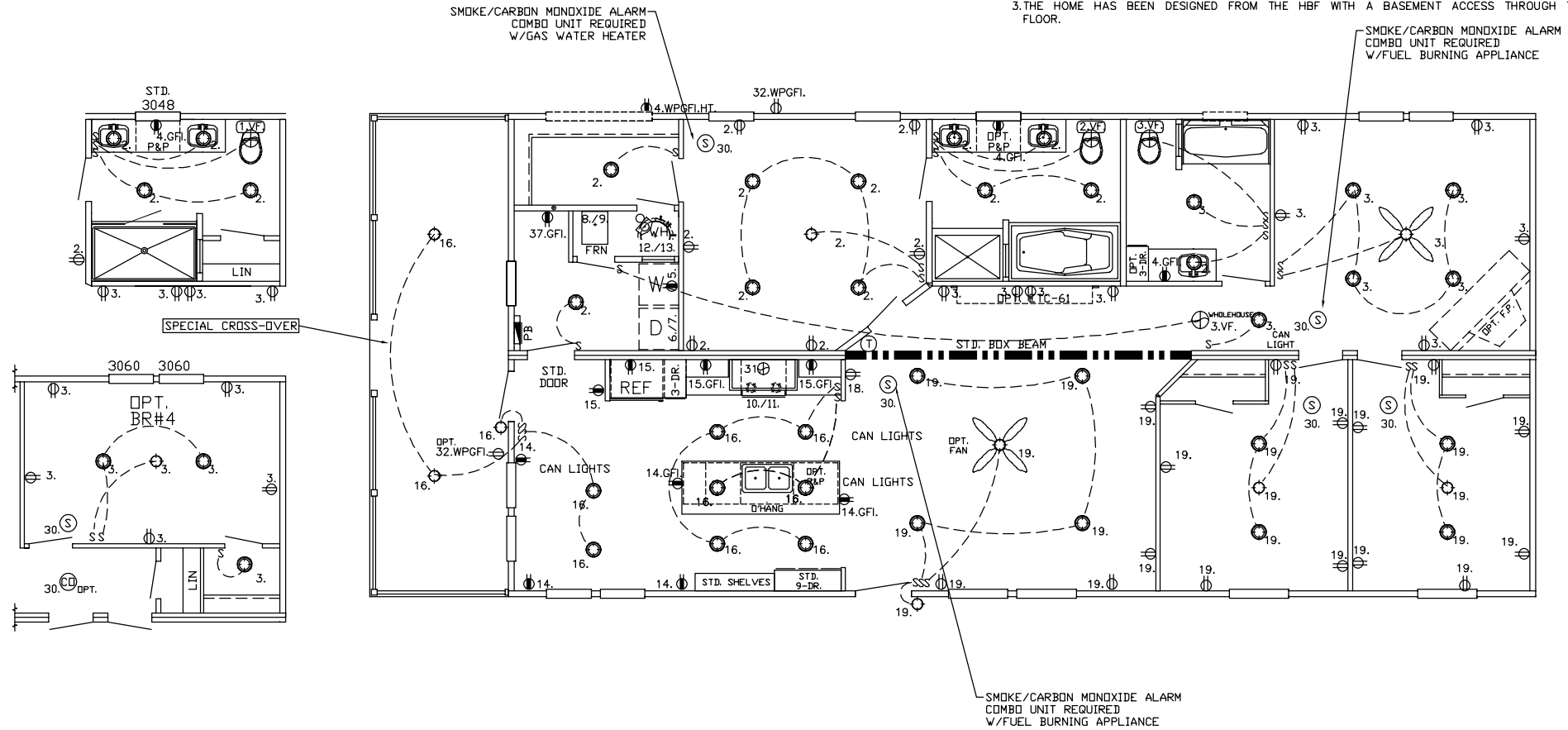


12/16/2024  
10:56AM

ZERH-28.VIS28583A.2.1

CARBON MONOXIDE (CO) ALARMS ARE ONLY REQUIRED WHEN ONE OR MORE OF THE FOLLOWING ARE PROVIDED BY THE HOME BUILDING FACILITY (HBF):

1. THE HOME IS EQUIPPED WITH A FUEL BURNING APPLIANCE INSTALLED AT THE HBF.
2. THE HOME HAS BEEN DESIGNED FROM THE HBF FOR AN ATTACHED GARAGE ADDITION.
3. THE HOME HAS BEEN DESIGNED FROM THE HBF WITH A BASEMENT ACCESS THROUGH THE FLOOR.



REF. EL-24 FOR NOTES & CIRCUITS

REF. PLN-11 FOR GENERAL NOTES

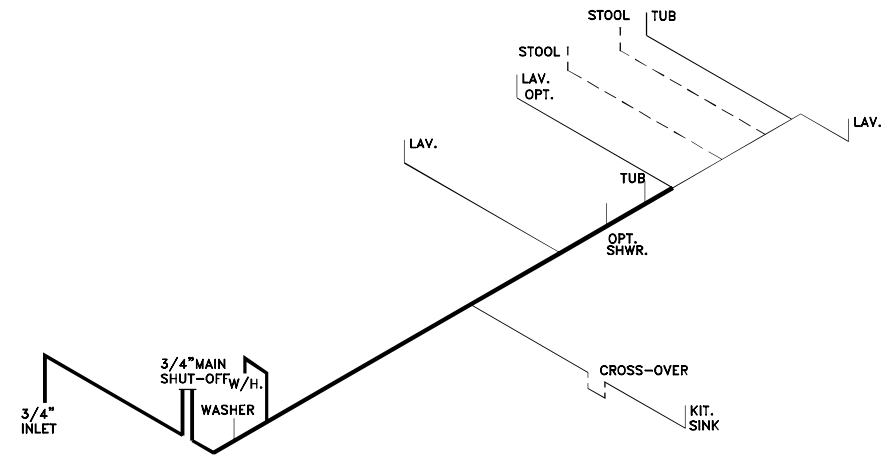
⊕ = RECEP. = 20AMP CIRCUIT = 12-2 WIRE (CIRCUITS BELOW)

CIRCUIT 37.

C:\ACAD\DDL-ZERH\VIS28583A-28X66-PORCH.dwg

**SOUTHERN HOMES**  
**MODEL VIS28583A-66-3/28X66**  
**\*\* PORCH VERSION \*\***

## DRAIN LINES



## WATER LINES

[illegible]

SOUTHERN HOMES  
MODEL VIS28583A-66-3/28X66  
\*\* PORCH VERSION \*\*

25'-2" MDL 3/4  
19'-6" MDL 1/2  
0.64 VOL (GAL)