

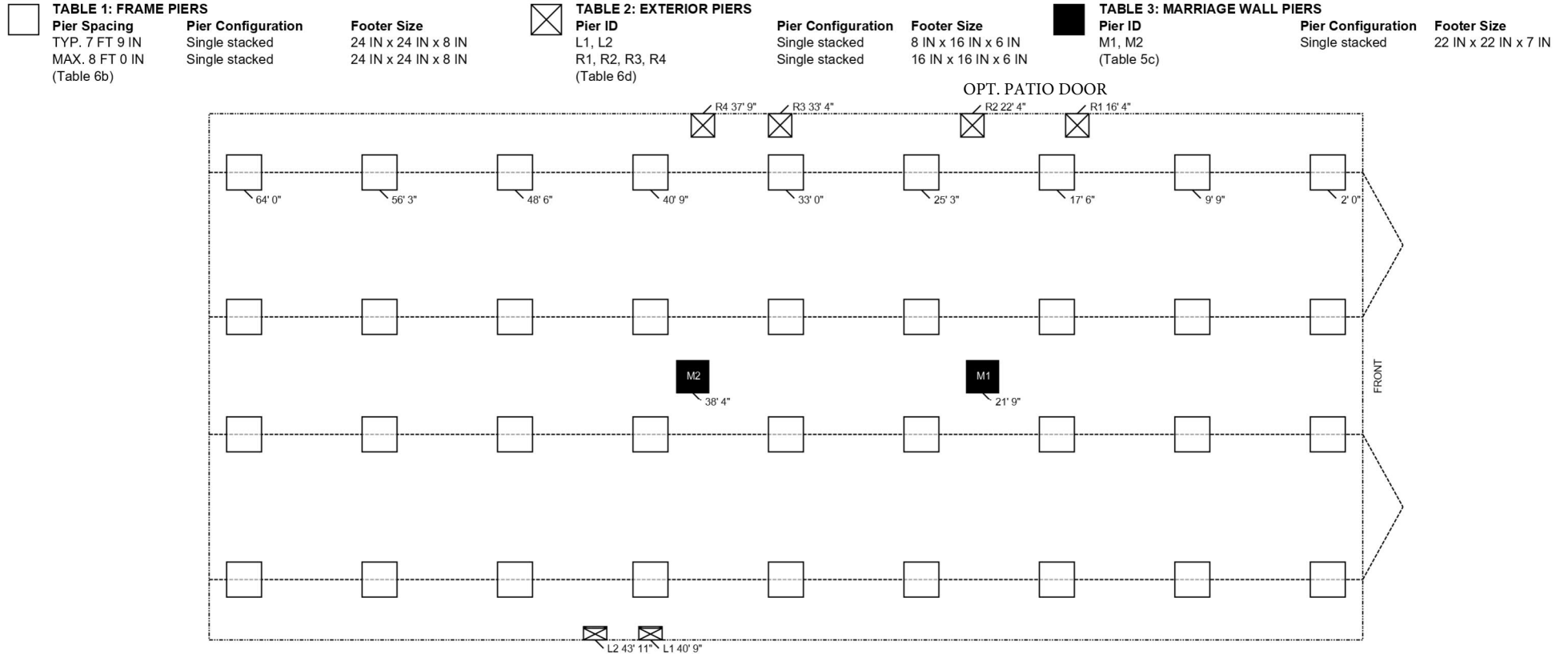
ClaytonGO: Foundation Plan Summary

Order Number: **N/A**
 Model Number: **941-VIS28663A-32x66**
 Home Building Facility: **941**

Home Width: **30 FT 0 IN**
 Home Length: **66 FT 0 IN**
 Outrigger Length (O.R.): **40.25 IN**
 Chassis Spacing: **99.5 IN**

Roof Load: **20 PSF**
 Soil Bearing Cap: **1500 PSF**
 Min. I-Beam Size: **8 IN**
 Calculated Eave/Overhang: **12 IN**

Use this QR Code to access DAPIA approved tables referenced within this design. Hover your iPhone camera over the code. For Android and other devices, download a QR Code reader. Questions? Email sitecompletionq&a@claytonhomes.com



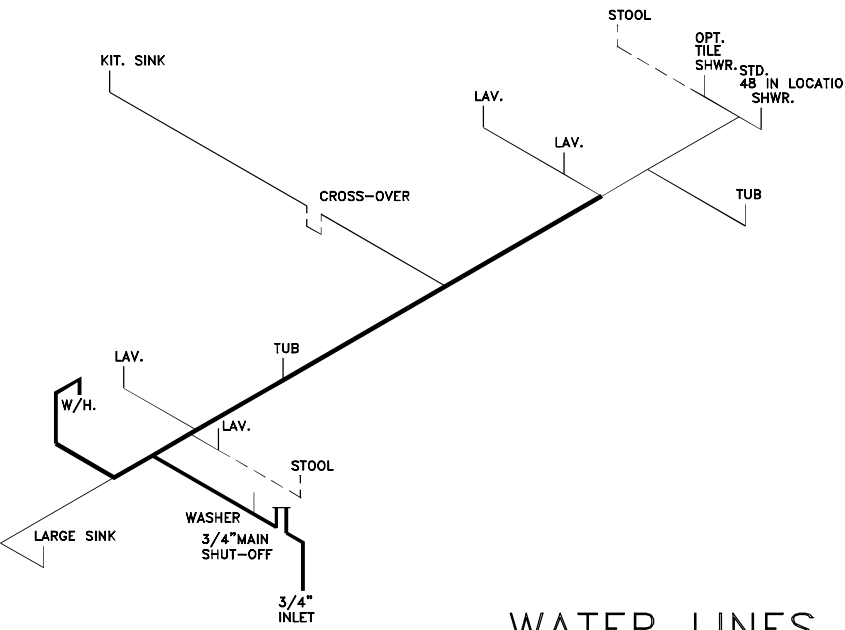
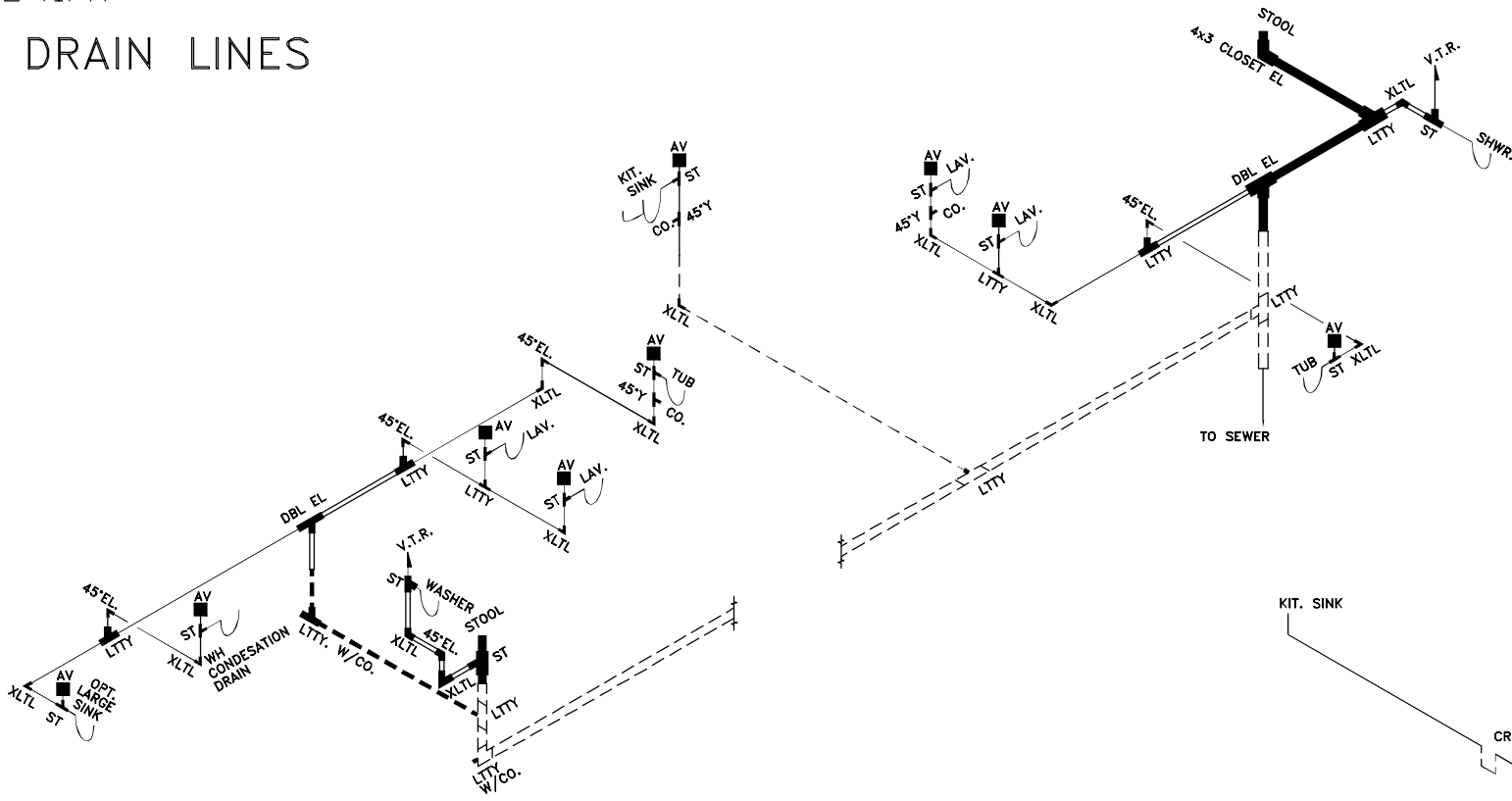
NOTES:

1. FROST PROTECTION WILL BE PROVIDED BY PLACING FOOTERS BELOW FROST DEPTH OF 35 INCHES PER (FIGURE 5A) OR FROM LAHJ. Frost depth for interior footers may be taken as half with R5 skirting per (Table 4a) [3285.312(b)]
2. SIDEWALL PIERS SHALL BE PLACED AT EXTERIOR DOORS AND WINDOW OPENINGS GREATER THAN 48" PER TABLE 2.
3. ALL FOOTERS WILL BE POURED CONCRETE. ALL SINGLE STACKED PIERS WILL HAVE A MINIMUM FOOTER THICKNESS OF 8 INCHES with footer depth extending below frost depth using 3,000 PSI minimum concrete (table 10A) (table 8)
4. THIS PIER LAYOUT HAS BEEN DERIVED USING PE SEALED & DAPIA APPROVED INSTALLATION MANUAL AS OUTLINED ABOVE. PLEASE SEE INSTALLATION MANUAL FOR PE SEAL AND DAPIA APPROVAL. (Reference to Clayton Homes DAPIA approved Installation manual) [Reference to Federal Statutes 24 CFR Part 3280, 3285 or 3286]



04/24/2023
2:41PM

DRAIN LINES



WATER LINES

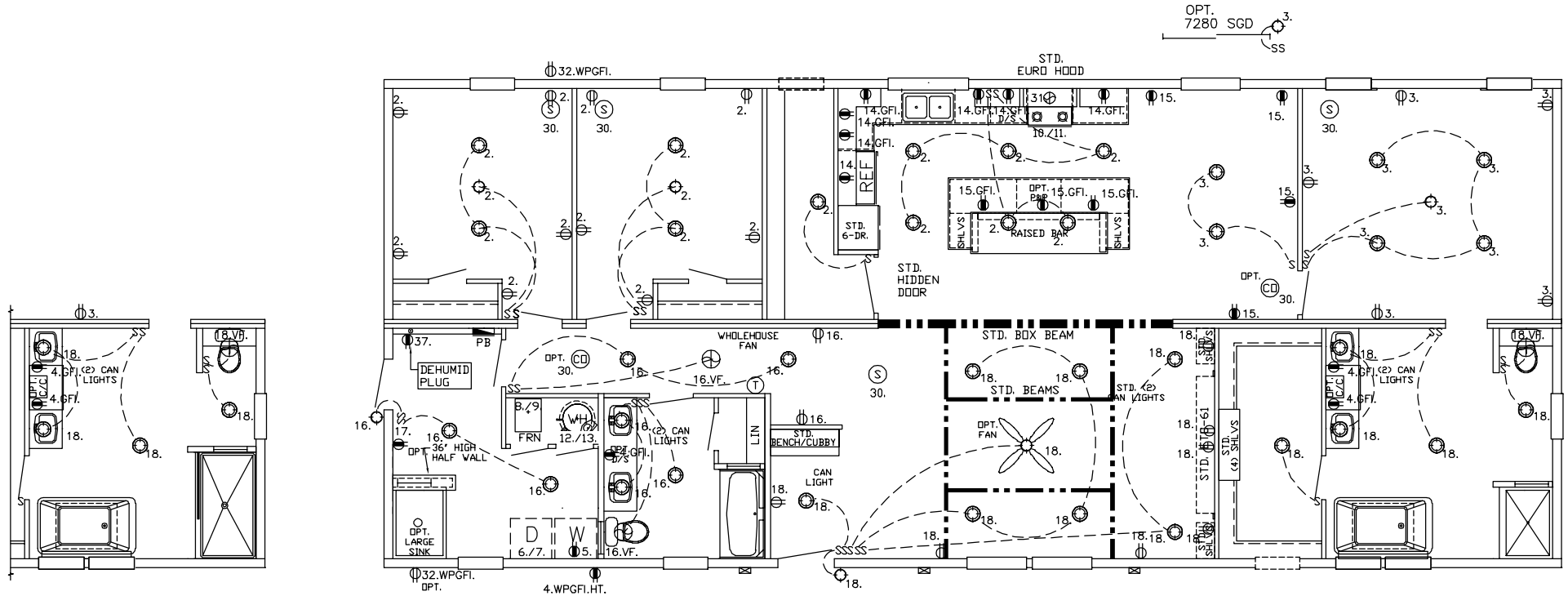
MP-28.VIS28663A.Z3

LOOSE PLUMBING FOR FIELD INSTALL		SIZE	3'	3'	3'	3'	3'	3'-15'	3x3x2	3'	3'-2'	2'	2'	2'	2'	2'-15'	1 1/2"	1 1/2"	1 1/2"	1 1/2"	1 1/2"	CLEAN	CD.
ITEM		LTTY	XLTL	COUP	DBL.EL.	ST	REDUC	LTTY	PIPE	REDUC	LTTY	XLTL	COUP	PIPE	ST	REDUC	LTTY	XLTL	COUP	PIPE	OUT	PLUG	
QTY.		2		2			1	2	70'		1			20'		2	1	3	40'	1	1		
= 1 1/2"		= 2"		= 3"		FOR DRAIN LINES		DRAIN, & WATER PIPING		TYP. NOTE: DWGS. NOT TO SCALE		TYP. NOTES: REFER TO PLN-11 FOR GEN. NOTES		SEE DAPIA FOR ANY DETAILS NOT SHOWN		ON DRAWINGS.		SOUTHERN HOMES		MODEL VIS28663A-66-3/32X66		29.83' MDL 3/4	
= 1 1/2"		= 2"		= 3"		FOR ON-SITE DRAIN LINES		TYP. NOTE FOR DRAIN LINES:		STOOL TRAP ARM LESS THAN 6'-0"		DASHED LINES ARE FIELD INSTALLED		TYP. NOTE FOR WATER LINES:		COLD AS SHOWN,		FOR HOT LINES DELETE		STOOL INLET & SHUTOFF		38.4' MDL 1/2	
= 1/2"		= 3/4"		= COLD ONLY		FOR WATER LINES		TYP. NOTE FOR WATER LINES:		COLD AS SHOWN,		FOR HOT LINES DELETE		STOOL INLET & SHUTOFF		0.90 VOL (GAL)		C:\ACAD\DDL-ZERO\VIS28663A.dwg					

04/24/2023
2:41PM

CARBON MONOXIDE (CO) ALARMS ARE ONLY REQUIRED WHEN ONE OR MORE OF THE FOLLOWING ARE PROVIDED BY THE HOME BUILDING FACILITY (HBF):

1. THE HOME IS EQUIPPED WITH A FUEL BURNING APPLIANCE INSTALLED AT THE HBF.
2. THE HOME HAS BEEN DESIGNED FROM THE HBF FOR AN ATTACHED GARAGE ADDITION.
3. THE HOME HAS BEEN DESIGNED FROM THE HBF WITH A BASEMENT ACCESS THROUGH THE FLOOR.



ELECTRICAL STAYS THE SAME ON THE 32' WIDE MODEL

REF. EL-24 FOR NOTES & CIRCUITS

REF. PLN-11 FOR GENERAL NOTES

⊙ = RECEP. = 20AMP CIRCUIT = 12-2 WIRE (CIRCUITS BELOW)

CIRCUIT 37.

C:\ACAD\DDL-ZERO\VIS28663A.dwg

SOUTHERN HOMES
MODEL VIS28663A-66-3/32X66