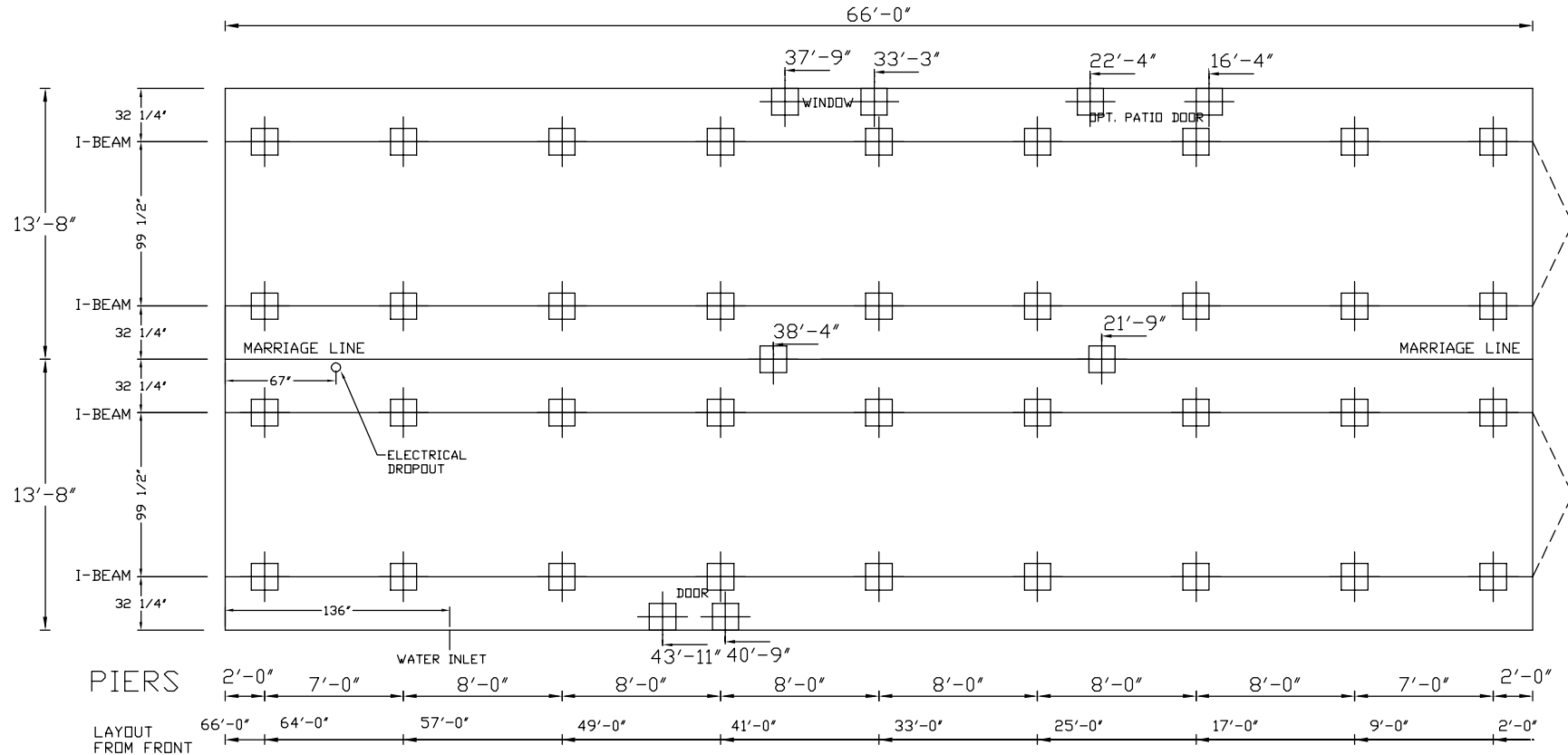


04/24/2023
2:41PM

NOTE: ADDITIONAL PERIMETER BLOCKING WILL BE REQUIRED WITH RECESSED OUTRIGGERS - NOT OVER 2'-0" FROM EACH END AND 8'-0" O.C., ALSO, ROCK, STONE, OR BRICK ON THE EXTERIOR, CEDAR COVERED WALLS ON THE INTERIOR WILL ALSO REQUIRE ADDITIONAL PERMIETER BLOCKING. THESE LOCATIONS SHOULD BE IDENTIFIED BY STICKERS ON THE UNIT



REFER TO LOADING CHART
IN INSTALLATION INSTRUCTIONS FOR
PIER SPACING PER PAD SIZE BEING USED

PIERS MAX 8FT O.C.
MAX 2FT FROM ENDS
FOLLOW INSTALLATION INSTRUCTIONS

C:\ACAD\DDL-ZERO\VIS28663A.dwg

NOTE: SOUTHERN ENERGY HOMES IS NOT RESPONSIBLE FOR FOUNDATION ALL WORK MUST CONFORM TO ALL APPLICABLE STATE AND LOCAL CODES, FHA REQUIREMENTS AND STD. CONSTRUCTION PRACTICES. SOUTHERN ENERGY HOMES IS NOT RESPONSIBLE FOR PIER LOCATIONS, THIS DRAWING IS A GUIDE ONLY. ALL DIMENSIONS TO BE CONFIRMED ON-SITE BY OTHERS AND INSTALLATION TO CONFORM TO SOUTHERN ENERGY HOMES INSTALLATION INSTRUCTIONS.

SOUTHERN HOMES
MODEL VIS28663A-66-3/28X66