

ClaytonGO: Foundation Plan Summary


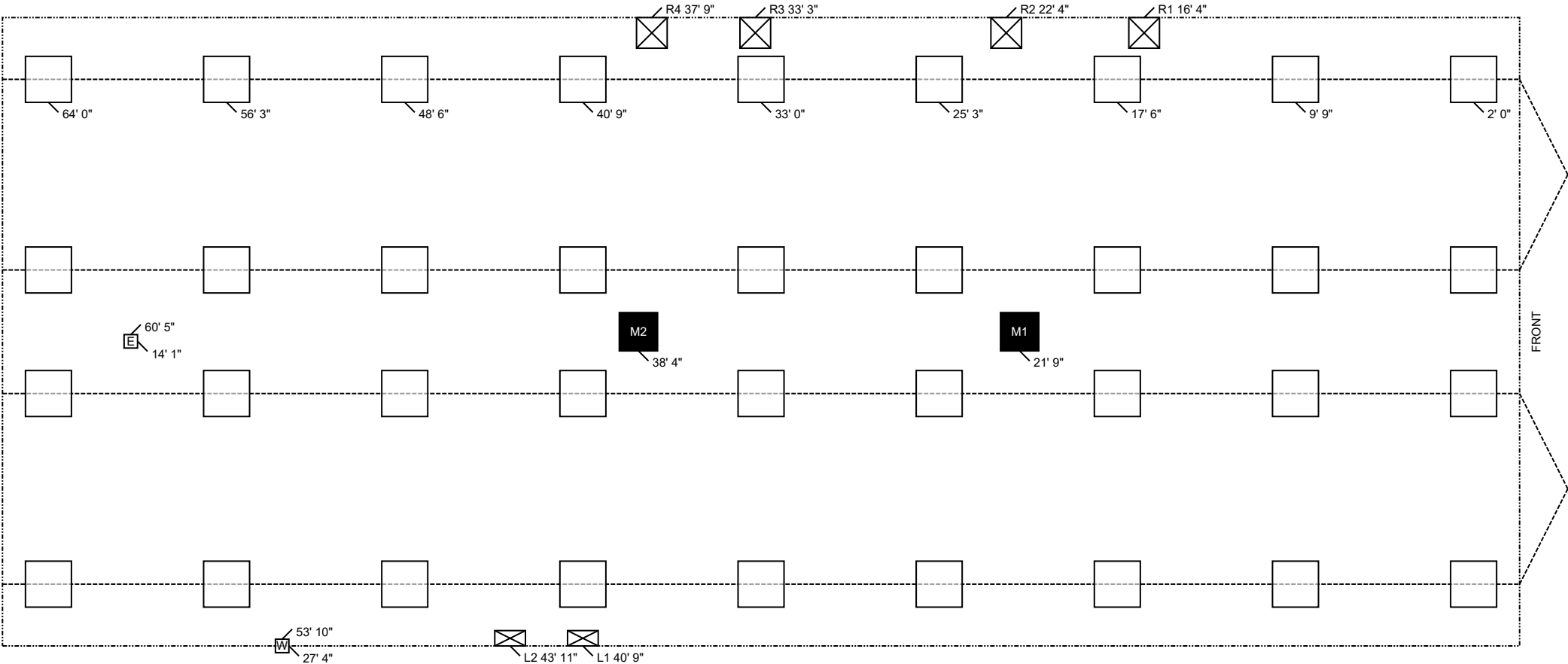
Order Number:	N/A	Home Width:	27 FT 4 IN	Roof Load:	20 PSF	Use this QR Code to access DAPIA approved tables referenced within this design. Hover your iPhone camera over the code. For Android and other devices, download a QR Code reader. Questions? Email sitecompletionq&a@claytonhomes.com	
Model Number:	941-VIS28663A-eBUILT-VERSION	Home Length:	66 FT 0 IN	Soil Bearing Cap:	1500 PSF		
Home Building Facility:	941	Outrigger Length (O.R.):	32.25 IN	Min. I-Beam Size:	8 IN		
		Chassis Spacing:	99.5 IN	Calculated Eave/Overhang:	12 IN		


TABLE 1: FRAME PIERS			TABLE 2: EXTERIOR PIERS			TABLE 3: MARRIAGE WALL PIERS		
Pier Spacing	Pier Configuration	Footer Size	Pier ID	Pier Configuration	Footer Size	Pier ID	Pier Configuration	Footer Size
TYP. 7 FT 9 IN MAX. 8 FT 0 IN (Table 6b)	Single stacked	24 IN x 24 IN x 8 IN 24 IN x 24 IN x 8 IN	L1, L2 R1, R2, R3, R4 (Table 6d)	Single stacked Single stacked	8 IN x 16 IN x 6 IN 16 IN x 16 IN x 6 IN	M1, M2 (Table 5b)	Single stacked	20 IN x 20 IN x 6 IN



- NOTES:**
- FROST PROTECTION WILL BE PROVIDED BY PLACING FOOTERS BELOW FROST DEPTH OF 36 INCHES PER (FIGURE 5A) OR FROM LAHJ. Frost depth for interior footers may be taken as half with R5 skirting per (Table 4a) [3285.312(b)]
 - SIDEWALL PIERS SHALL BE PLACED AT EXTERIOR DOORS AND WINDOW OPENINGS GREATER THAN 48" PER TABLE 2.
 - ALL FOOTERS WILL BE POURED CONCRETE. ALL SINGLE STACKED PIERS WILL HAVE A MINIMUM FOOTER THICKNESS OF 8 INCHES with footer depth extending below frost depth using 3,000 PSI minimum concrete (table 10A) (table 8)
 - THIS PIER LAYOUT HAS BEEN DERIVED USING PE SEALED & DAPIA APPROVED INSTALLATION MANUAL AS OUTLINED ABOVE. PLEASE SEE INSTALLATION MANUAL FOR PE SEAL AND DAPIA APPROVAL. (Reference to Clayton Homes DAPIA approved Installation manual) [Reference to Federal Statutes 24 CFR Part 3280, 3285 or 3286]



ClaytonGO: Foundation Plan Summary

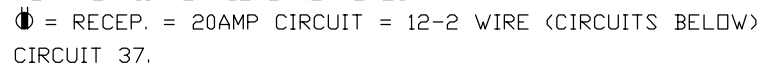
Order Number:	N/A	Home Width:	27 FT 4 IN	Roof Load:	20 PSF	<div>Use this QR Code to access DAPIA approved tables referenced within this design. Hover your iPhone camera over the code. For Android and other devices, download a QR Code reader. Questions? Email sitecompletionqa@claytonhomes.com</div> 
Model Number:	941-VIS28663A-eBUILT-VERSION	Home Length:	66 FT 0 IN	Soil Bearing Cap:	1500 PSF	
Home Building Facility:	941	Outrigger Length (O.R.):	32.25 IN	Min. I-Beam Size:	8 IN	
		Chassis Spacing:	99.5 IN	Calculated Eave/Overhang:	12 IN	

UTILITIES		LOCATION	
ID	UTILITY	LEFT	DOWN
E	Elec Entrance	60 FT 5 IN	14 FT 1 IN
W	Water Inlet	53 FT 10 IN	27 FT 4 IN



MP-28.VIS28663A.Z2

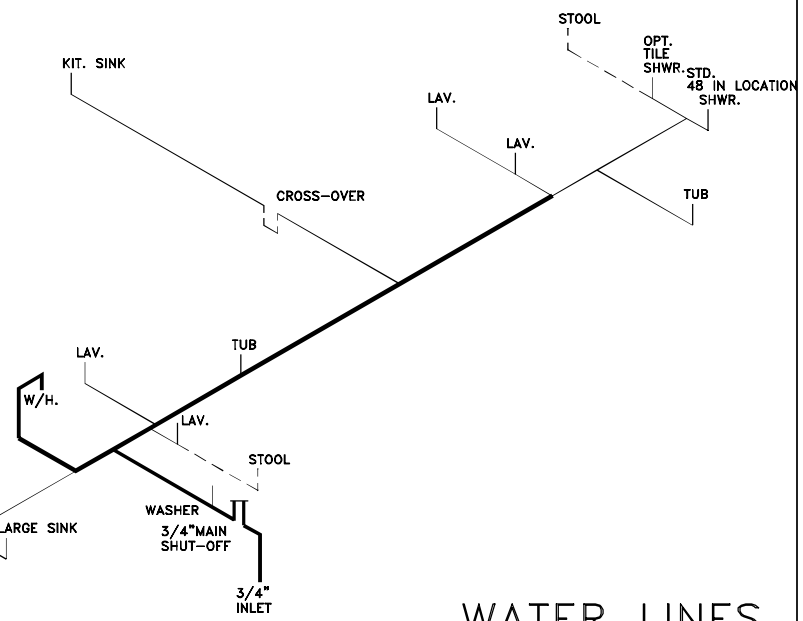
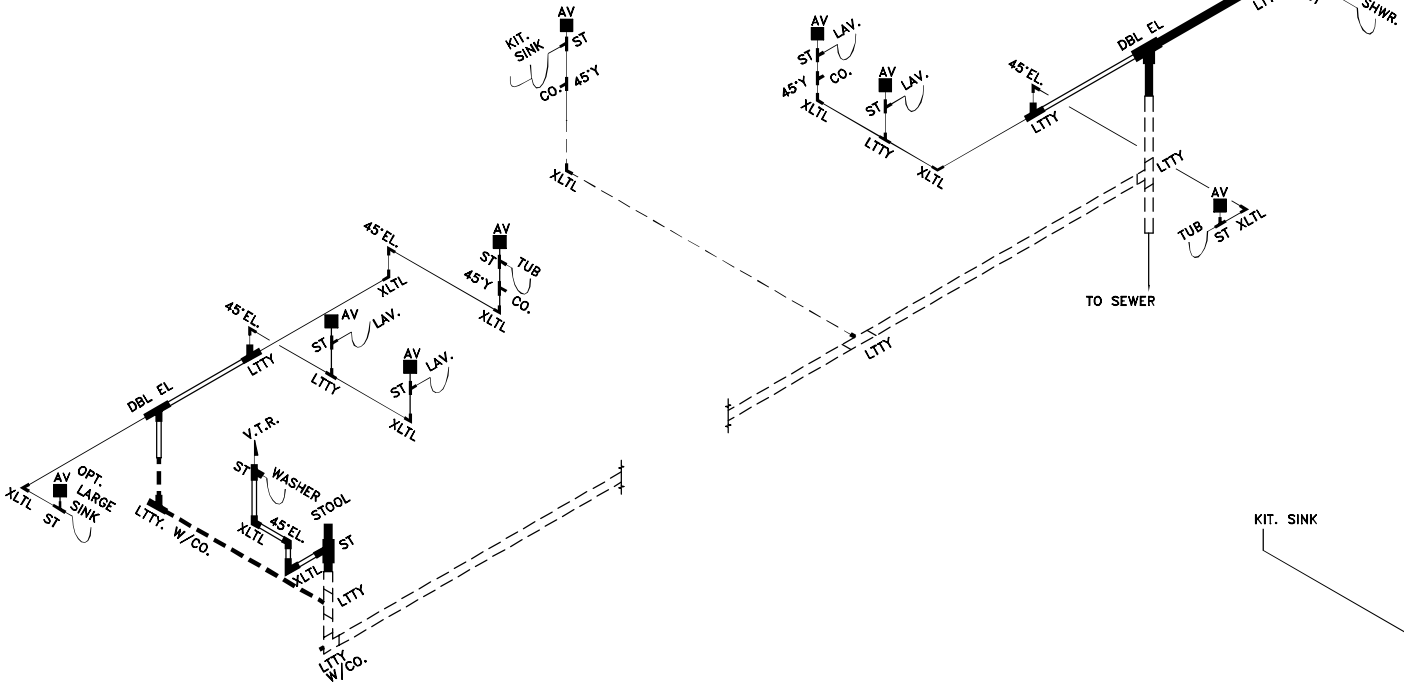
1. THE HOME IS EQUIPPED WITH A FUEL BURNING APPLIANCE INSTALLED AT THE HBF.
2. THE HOME HAS BEEN DESIGNED FROM THE HBF FOR AN ATTACHED GARAGE ADDITION.
3. THE HOME HAS BEEN DESIGNED FROM THE HBF WITH A BASEMENT ACCESS THROUGH THE FLOOR.



SOUTHERN HOMES

04/24/2023
2:41PM

DRAIN LINES



MP-28.VIS28663A.Z3

LOOSE PLUMBING FOR FIELD INSTALL		SIZE	3"	3"	3"	3"	3"	3-1.5	3x3x2	3"	3-2	2"	2"	2"	2"	2"	2-1.5	1 1/2	1 1/2	1 1/2	1 1/2	CLEAN	CD.
ITEM	LTTY	XLTL	COUP	DBL.EL.	ST	REDUC	LTTY	PIPE	REDUC	LTTY	XLTL	COUP	PIPE	ST	REDUC	LTTY	XLTL	COUP	PIPE	OUT	PLUG		
QTY.	2		2			1	2	70'		1			20'	ST	2		1	3	40'	1	1	C:\ACAD\DDL-ZERO\VIS28663A.dwg	
= 1 1/2"		= 2"		= 3"		FOR DRAIN LINES		DRAIN, & WATER PIPING		TYP. NOTE: DWGS. NOT TO SCALE		TYP. NOTES: REFER TO PLN-11 FOR GEN. NOTES		SEE DAPIA FOR ANY DETAILS NOT SHOWN		ON DRAWINGS.		SOUTHERN HOMES		MODEL VIS28663A-66-3/28X66			
= 1 1/2"		= 2"		= 3"		FOR ON-SITE DRAIN LINES		TYP. NOTE FOR DRAIN LINES:		STOOL TRAP ARM LESS THAN 6'-0"		DASHED LINES ARE FIELD INSTALLED		TYP. NOTE FOR WATER LINES:		COLD AS SHOWN,		FOR HOT LINES DELETE		STOOL INLET & SHUTOFF			
= 1 1/2"		= 3/4"		= COLD ONLY		FOR WATER LINES														30'-6" MDL 3/4		57'-6" MDL 1/2	
																						1.09 VOL (GAL)	