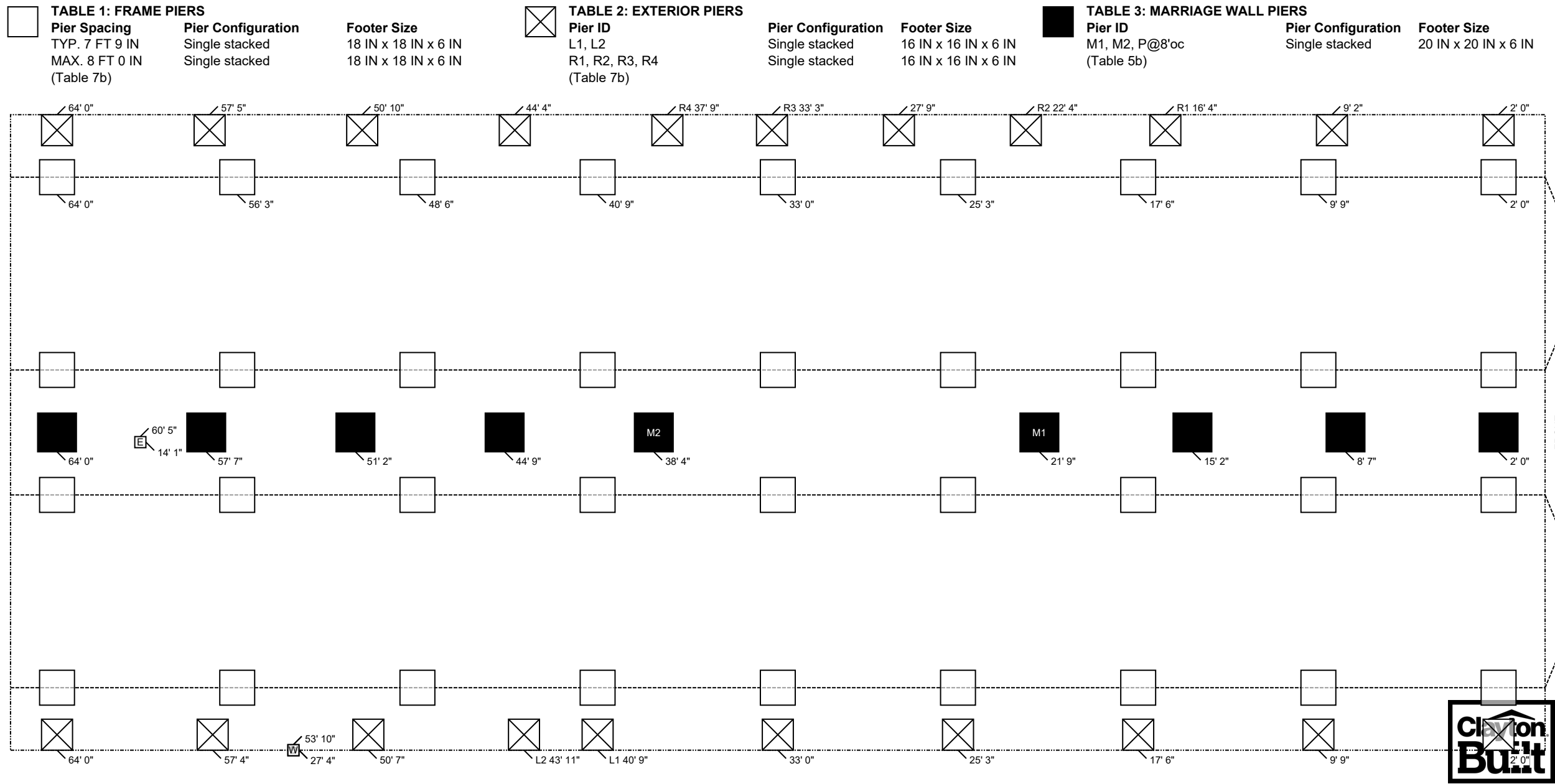


ClaytonGO: Foundation Plan Summary

| | | | | | | |
|-------------------------|---------------|--------------------------|------------|---------------------------|----------|--|
| Order Number: | N/A | Home Width: | 27 FT 4 IN | Roof Load: | 20 PSF | Use this QR Code to access DAPIA approved tables referenced within this design. Hover your iPhone camera over the code. For Android and other devices, download a QR Code reader. Questions? Email sitecompletionq&a@claytonhomes.com |
| Model Number: | 941-VIS28663A | Home Length: | 66 FT 0 IN | Soil Bearing Cap: | 1500 PSF | |
| Home Building Facility: | 941 | Outrigger Length (O.R.): | 32.25 IN | Min. I-Beam Size: | 8 IN | |
| | | Chassis Spacing: | 99.5 IN | Calculated Eave/Overhang: | 12 IN | |



ClaytonGO: Foundation Plan Summary

| | | | | | | |
|-------------------------|---------------|--------------------------|------------|---------------------------|----------|--|
| Order Number: | N/A | Home Width: | 27 FT 4 IN | Roof Load: | 20 PSF | Use this QR Code to access DAPIA approved tables referenced within this design. Hover your iPhone camera over the code. For Android and other devices, download a QR Code reader. Questions? Email sitecompletionq&a@claytonhomes.com |
| Model Number: | 941-VIS28663A | Home Length: | 66 FT 0 IN | Soil Bearing Cap: | 1500 PSF | |
| Home Building Facility: | 941 | Outrigger Length (O.R.): | 32.25 IN | Min. I-Beam Size: | 8 IN | |
| | | Chassis Spacing: | 99.5 IN | Calculated Eave/Overhang: | 12 IN | |

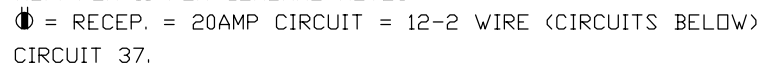
| UTILITIES | | LOCATION | |
|-----------|---------------|-------------|------------|
| ID | UTILITY | LEFT | DOWN |
| D | Drain Drop | 53 FT 10 IN | 27 FT 4 IN |
| E | Elec Entrance | 60 FT 5 IN | 14 FT 1 IN |
| W | Water Inlet | 53 FT 10 IN | 27 FT 4 IN |

- NOTES:**
1. FROST PROTECTION WILL BE PROVIDED BY PLACING FOOTERS BELOW FROST DEPTH OF 36 INCHES PER (FIGURE 5A) OR FROM LAHJ. Frost depth for interior footers may be taken as half with R5 skirting per (Table 4a) [3285.312(b)]
 2. PLACE SUPPORTS AT ALL EXTERIOR OPENINGS & PERIMETER BLOCK ALONG EXTERIOR SIDEWALLS (P), AT 96 INCH ON CENTER. & ALONG MARRIAGE WALL(S) AT 96 INCHES ON CENTER.
 3. ALL FOOTERS WILL BE POURED CONCRETE. ALL SINGLE STACKED PIERS WILL HAVE A MINIMUM FOOTER THICKNESS OF 6 INCHES with footer depth extending below frost depth using 3,000 PSI minimum concrete (table 10A) (table 8)
 4. THIS PIER LAYOUT HAS BEEN DERIVED USING PE SEALED & DAPIA APPROVED INSTALLATION MANUAL AS OUTLINED ABOVE. PLEASE SEE INSTALLATION MANUAL FOR PE SEAL AND DAPIA APPROVAL. (Reference to Clayton Homes DAPIA approved Installation manual) [Reference to Federal Statutes 24 CFR Part 3280, 3285 or 3286]



MP-28.VIS28663A.Z2

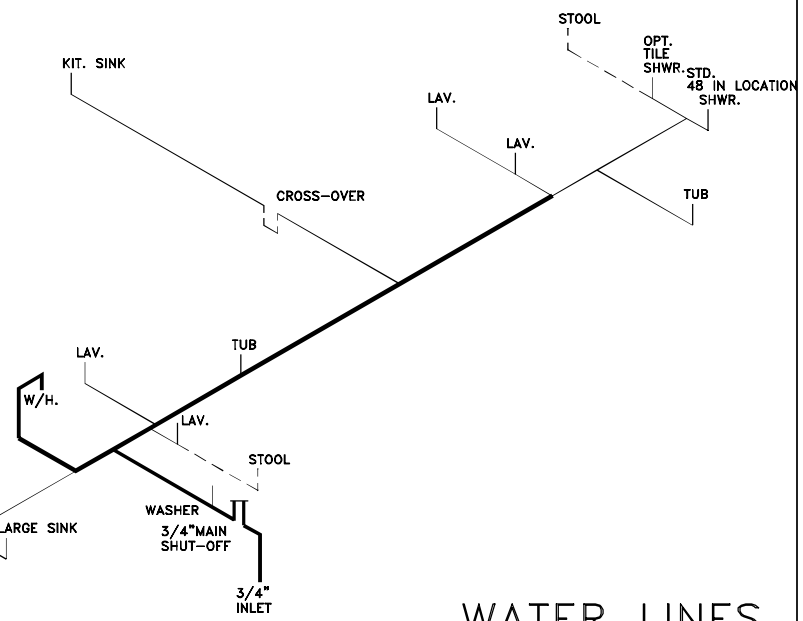
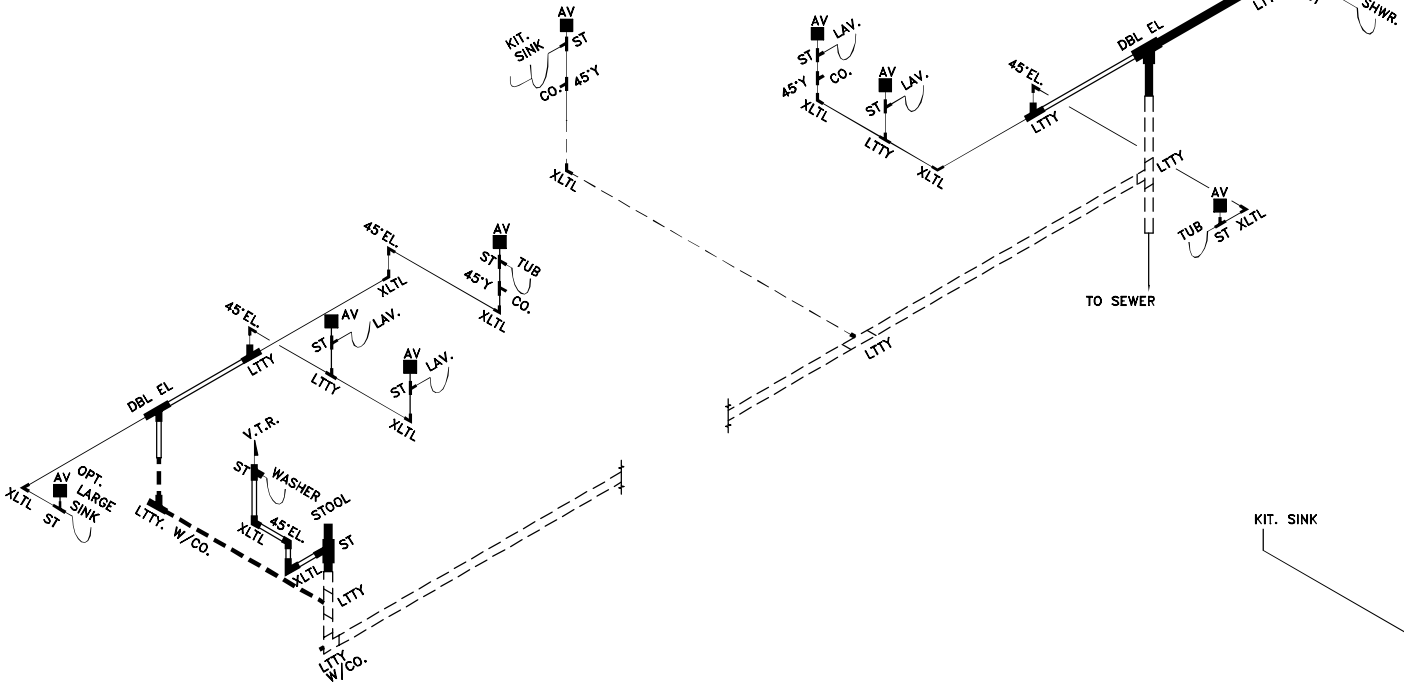
1. THE HOME IS EQUIPPED WITH A FUEL BURNING APPLIANCE INSTALLED AT THE HBF.
2. THE HOME HAS BEEN DESIGNED FROM THE HBF FOR AN ATTACHED GARAGE ADDITION.
3. THE HOME HAS BEEN DESIGNED FROM THE HBF WITH A BASEMENT ACCESS THROUGH THE FLOOR.



SOUTHERN HOMES

04/24/2023
2:41PM

DRAIN LINES



MP-28.VIS28663A.Z3

| LOOSE PLUMBING FOR FIELD INSTALL | | SIZE | 3" | 3" | 3" | 3" | 3" | 3-1.5 | 3x3x2 | 3" | 3-2 | 2" | 2" | 2" | 2" | 2" | 2-1.5 | 1 1/2 | 1 1/2 | 1 1/2 | 1 1/2 | CLEAN | CD. |
|----------------------------------|------|--------|------|-------------|----|-------------------------|------|-------|-------|--|------|------|------|---|-------|------|-------|--|-------|-------|-------|--------------------------------|-----|
| ITEM | LTTY | XLTL | COUP | DBL.EL. | ST | REDUC | LTTY | PIPE | REDUC | LTTY | XLTL | COUP | PIPE | ST | REDUC | LTTY | XLTL | COUP | PIPE | OUT | PLUG | | |
| QTY. | 2 | | 2 | | | 1 | 2 | 70' | | 1 | | | 20' | | 2 | | 1 | 3 | 40' | 1 | 1 | C:\ACAD\DDL-ZERO\VIS28663A.dwg | |
| = 1 1/2" | | = 2" | | = 3" | | FOR DRAIN LINES | | | | DRAIN, & WATER PIPING TYP. NOTE: DWGS. NOT TO SCALE | | | | TYP. NOTES: REFER TO PLN-11 FOR GEN. NOTES SEE DAPIA FOR ANY DETAILS NOT SHOWN ON DRAWINGS. | | | | SOUTHERN HOMES MODEL VIS28663A-66-3/28X66 | | | | | |
| = 1 1/2" | | = 2" | | = 3" | | FOR ON-SITE DRAIN LINES | | | | TYP. NOTE FOR DRAIN LINES: STOOL TRAP ARM LESS THAN 6'-0" DASHED LINES ARE FIELD INSTALLED | | | | | | | | | | | | | |
| = 1 1/2" | | = 3/4" | | = COLD ONLY | | FOR WATER LINES | | | | TYP. NOTE FOR WATER LINES: COLD AS SHOWN, FOR HOT LINES DELETE STOOL INLET & SHUTOFF | | | | | | | | | | | | | |
| | | | | | | | | | | | | | | 30'-6" MDL 3/4 57'-6" MDL 1/2 1.09 VOL (GAL) | | | | | | | | | |

WATER LINES

C:\ACAD\DDL-ZERO\VIS28663A.dwg