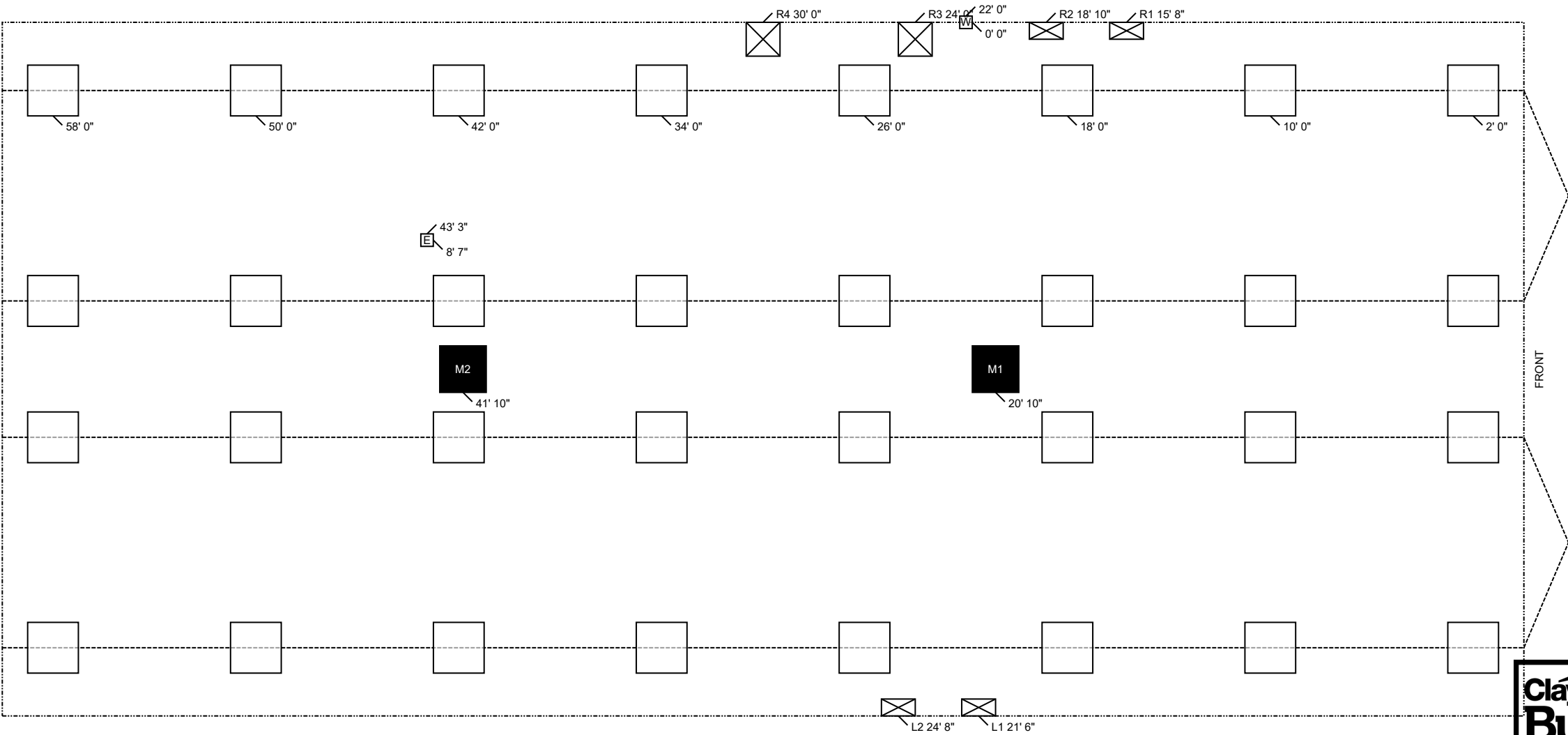


ClaytonGO: Foundation Plan Summary

Order Number:	N/A	Home Width:	27 FT 4 IN	Roof Load:	20 PSF	Use this QR Code to access DAPIA approved tables referenced within this design. Hover your iPhone camera over the code. For Android and other devices, download a QR Code reader. Questions? Email sitecompletionq&a@claytonhomes.com
Model Number:	941-VIS28603B	Home Length:	60 FT 0 IN	Soil Bearing Cap:	1500 PSF	
Home Building Facility:	941	Outrigger Length (O.R.):	32.25 IN	Min. I-Beam Size:	10 IN	
		Chassis Spacing:	99.5 IN	Calculated Eave/Overhang:	12 IN	



TABLE 1: FRAME PIERS	TABLE 2: EXTERIOR PIERS	TABLE 3: MARRIAGE WALL PIERS
<div></div> Pier Spacing TYP. 8 FT 0 IN MAX. 8 FT 0 IN (Table 6b)	<div></div> Pier ID L1, L2 R1, R2 R3, R4 (Table 6d)	<div></div> Pier ID M1, M2 (Table 5b)
Pier Configuration Single stacked	Pier Configuration Single stacked	Pier Configuration Single stacked
Footer Size 24 IN x 24 IN x 8 IN 24 IN x 24 IN x 8 IN	Footer Size 8 IN x 16 IN x 6 IN 8 IN x 16 IN x 6 IN 16 IN x 16 IN x 6 IN	Footer Size 22 IN x 22 IN x 7 IN



ClaytonGO: Foundation Plan Summary

Order Number:	N/A	Home Width:	27 FT 4 IN	Roof Load:	20 PSF	Use this QR Code to access DAPIA approved tables referenced within this design. Hover your iPhone camera over the code. For Android and other devices, download a QR Code reader. Questions? Email sitecompletionq&a@claytonhomes.com
Model Number:	941-VIS28603B	Home Length:	60 FT 0 IN	Soil Bearing Cap:	1500 PSF	
Home Building Facility:	941	Outrigger Length (O.R.):	32.25 IN	Min. I-Beam Size:	10 IN	
		Chassis Spacing:	99.5 IN	Calculated Eave/Overhang:	12 IN	

UTILITIES		LOCATION	
ID	UTILITY	LEFT	DOWN
E	Elec Entrance	43 FT 3 IN	8 FT 7 IN
W	Water Inlet	22 FT 0 IN	0 FT 0 IN

- NOTES:**
- 1. FROST PROTECTION WILL BE PROVIDED BY PLACING FOOTERS BELOW FROST DEPTH OF 36 INCHES PER (FIGURE 5A) OR FROM LAHJ. Frost depth for interior footers may be taken as half with R5 skirting per (Table 4a) [3285.312(b)]
 - 2. SIDEWALL PIERS SHALL BE PLACED AT EXTERIOR DOORS AND WINDOW OPENINGS GREATER THAN 48" PER TABLE 2.
 - 3. ALL FOOTERS WILL BE POURED CONCRETE. ALL SINGLE STACKED PIERS WILL HAVE A MINIMUM FOOTER THICKNESS OF 8 INCHES with footer depth extending below frost depth using 3,000 PSI minimum concrete (table 10A) (table 8)
 - 4. THIS PIER LAYOUT HAS BEEN DERIVED USING PE SEALED & DAPIA APPROVED INSTALLATION MANUAL AS OUTLINED ABOVE. PLEASE SEE INSTALLATION MANUAL FOR PE SEAL AND DAPIA APPROVAL. (Reference to Clayton Homes DAPIA approved Installation manual) [Reference to Federal Statutes 24 CFR Part 3280, 3285 or 3286]

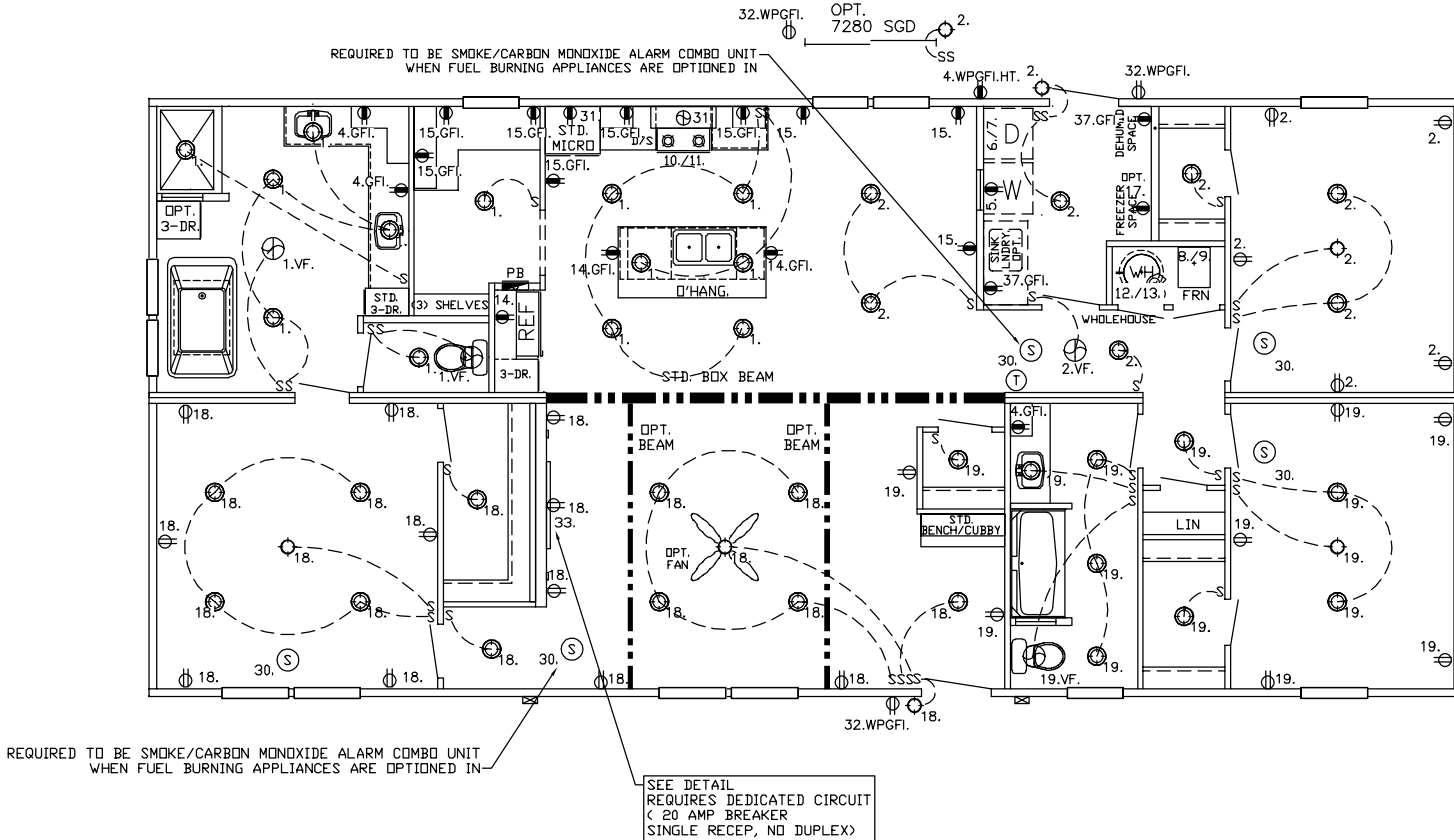


05/27/2025
10:19AM

ALL CAN LIGHTS ABOVE TUBS/SHWRS ARE
GASKETED AND LISTED FOR WET AREAS

CARBON MONOXIDE (CO) ALARMS ARE ONLY REQUIRED WHEN ONE OR MORE OF THE FOLLOWING ARE PROVIDED BY THE HOME BUILDING FACILITY (HBF):

1. THE HOME IS EQUIPPED WITH A FUEL BURNING APPLIANCE INSTALLED AT THE HBF.
2. THE HOME HAS BEEN DESIGNED FROM THE HBF FOR AN ATTACHED GARAGE ADDITION.
3. THE HOME HAS BEEN DESIGNED FROM THE HBF WITH A BASEMENT ACCESS THROUGH THE FLOOR.



C:\ACADDBL-ZERO\VIS28603B.dwg

REF. EL-24 FOR NOTES & CIRCUITS
REF. PLN-11 FOR GENERAL NOTES

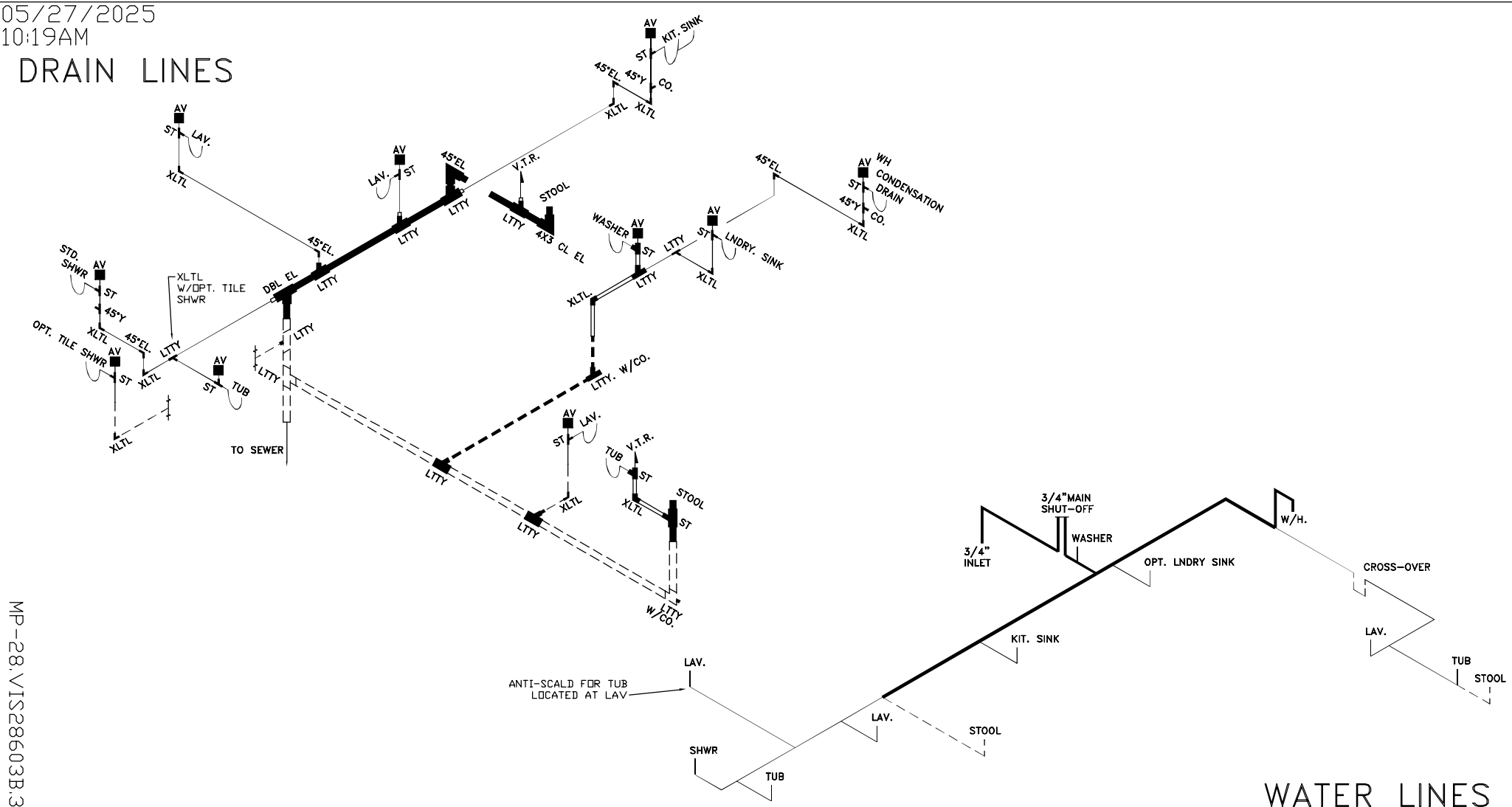
① = RECEP. = 20AMP CIRCUIT = 12-2 WIRE

SOUTHERN HOMES
MODEL VIS28603B-60-3/28X60

MP-28.VIS28603B.2

05/27/2025
10:19AM

DRAIN LINES



WATER LINES

LOOSE PLUMBING FOR FIELD INSTALL	SIZE	3"	3"	3"	3"	3"	3-1.5	3x3x2	3"	3-2	2"	2"	2"	2"	2"	2-1.5	1 1/2"	1 1/2"	1 1/2"	1 1/2"	CLEAN	CO.
	ITEM	LTTY	XLTL	COUP	DBL EL	ST	REDUC	LTTY	PIPE	REDUC	LTTY	XLTL	COUP	PIPE	ST	REDUC	LTTY	XLTL	COUP	PIPE	OUT	PLUG
	QTY.	2		2			1	3	50'		1			20'		3		2		30'	2	2
= 1 1/2"		= 2"		= 3"		FOR DRAIN LINES		DRAIN, & WATER PIPING		TYP. NOTE: DWGS. NOT TO SCALE		TYP. NOTES: REFER TO PLN-11 FOR GEN. NOTES		SEE DAPIA FOR ANY DETAILS NOT SHOWN		ON DRAWINGS.		SOUTHERN HOMES MODEL VIS28603B-60-3/28X60				
= 1 1/2"		= 2"		= 3"		FOR ON-SITE DRAIN LINES		TYP. NOTE FOR DRAIN LINES:		STOOL TRAP ARM LESS THAN 6'-0"		DASHED LINES ARE FIELD INSTALLED										
= 1 1/2"		= 3/4"		= COLD ONLY		FOR WATER LINES		TYP. NOTE FOR WATER LINES:		COLD AS SHOWN,		FOR HOT LINES DELETE		STOOL INLET & SHUTOFF								
																				28.0' MDL 3/4		
																				27.0' MDL 1/2		
																				0.76 VOL (GAL)		