

### ClaytonGO: Foundation Plan Summary

Order Number: **N/A**  
 Model Number: **941-VIS32603C**  
 Home Building Facility: **941**

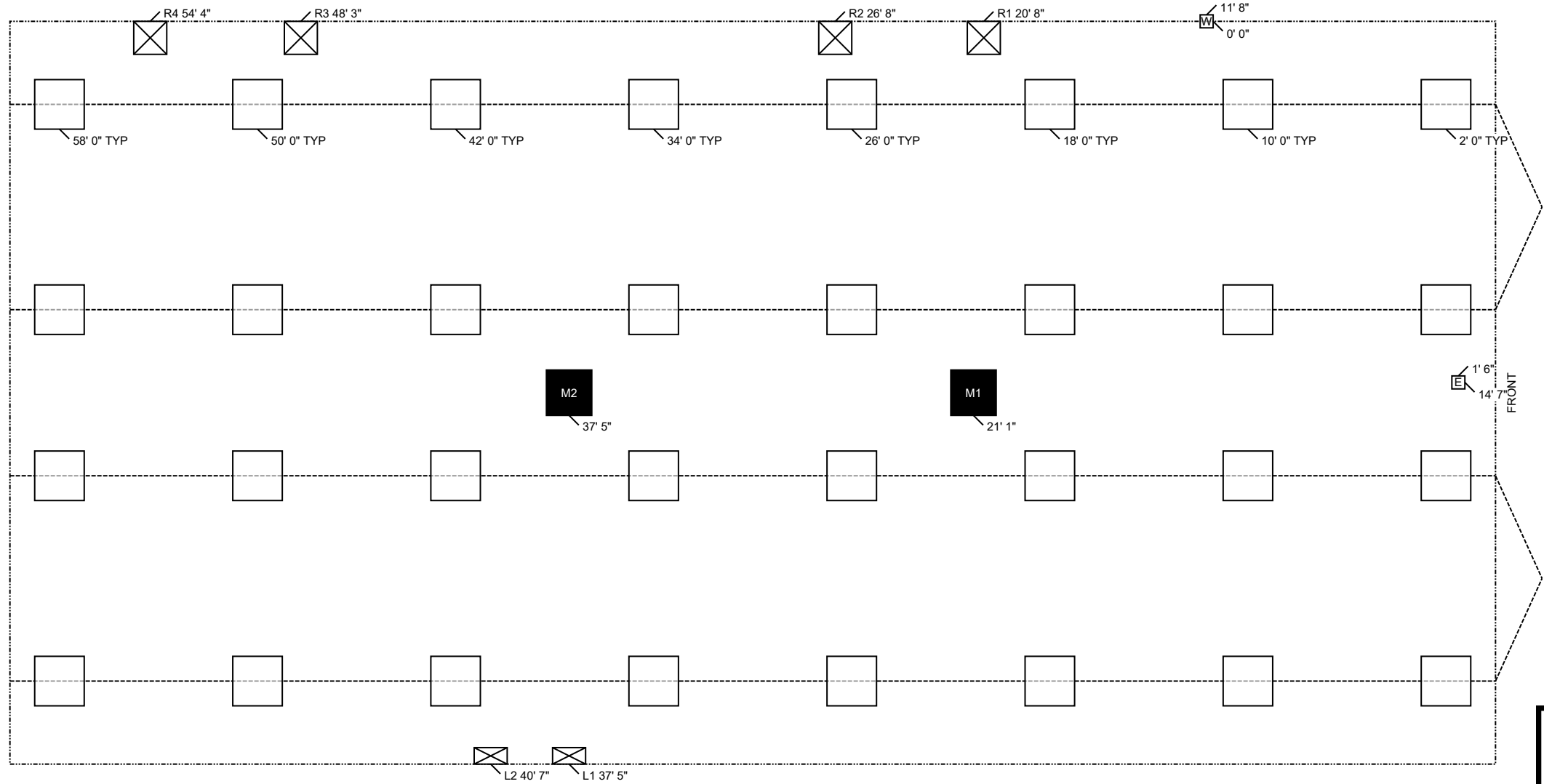
Home Width: **30 FT 0 IN**  
 Home Length: **60 FT 0 IN**  
 Outrigger Length (O.R.): **40.25 IN**  
 Chassis Spacing: **99.5 IN**

Roof Load: **20 PSF**  
 Soil Bearing Cap: **1500 PSF**  
 Min. I-Beam Size: **10 IN**  
 Calculated Eave/Overhang: **12 IN**

Use this QR Code to access DAPIA approved tables referenced within this design. Hover your iPhone camera over the code. For Android and other devices, download a QR Code reader.  
**Questions? Email [sitecompletionq&a@claytonhomes.com](mailto:sitecompletionq&a@claytonhomes.com)**



<p> <b>TABLE 1: FRAME PIERS</b></p> <p><b>Pier Spacing</b> TYP. 8 FT 0 IN MAX. 8 FT 0 IN (Table 7)</p> <p><b>Pier Configuration</b> Single stacked Single stacked</p> <p><b>Footer Size</b> 24 IN x 24 IN x 8 IN 24 IN x 24 IN x 8 IN</p>	<p> <b>TABLE 2: EXTERIOR PIERS</b></p> <p><b>Pier ID</b> L1, L2 R1, R2, R3, R4 (Table 8)</p> <p><b>Pier Configuration</b> Single stacked Single stacked</p> <p><b>Footer Size</b> 8 IN x 16 IN x 6 IN 16 IN x 16 IN x 6 IN</p>	<p> <b>TABLE 3: MARRIAGE WALL PIERS</b></p> <p><b>Pier ID</b> M1, M2 (Table 6)</p> <p><b>Pier Configuration</b> Single stacked</p> <p><b>Footer Size</b> 22 IN x 22 IN x 7 IN</p>
---	--	---



### ClaytonGO: Foundation Plan Summary

Order Number: **N/A**  
Model Number: **941-VIS32603C**  
Home Building Facility: **941**

Home Width: **30 FT 0 IN**  
Home Length: **60 FT 0 IN**  
Outrigger Length (O.R.): **40.25 IN**  
Chassis Spacing: **99.5 IN**

Roof Load: **20 PSF**  
Soil Bearing Cap: **1500 PSF**  
Min. I-Beam Size: **10 IN**  
Calculated Eave/Overhang: **12 IN**

Use this QR Code to access DAPIA approved tables referenced within this design. Hover your iPhone camera over the code. For Android and other devices, download a QR Code reader. **Questions? Email [sitecompletionq&a@claytonhomes.com](mailto:sitecompletionq&a@claytonhomes.com)**



UTILITIES		LOCATION	
ID	UTILITY	LEFT	DOWN
E	Elec Entrance	1 FT 6 IN	14 FT 7 IN
W	Water Inlet	11 FT 8 IN	0 FT 0 IN

**NOTES:**

1. FROST PROTECTION WILL BE PROVIDED BY PLACING FOOTERS BELOW FROST DEPTH OF 36 INCHES PER (FIGURE 5A) OR FROM LAHJ. Frost depth for interior footers may be taken as half with R5 skirting per (Table 5) [3285.312(b)]
2. SIDEWALL PIERS SHALL BE PLACED AT EXTERIOR DOORS AND WINDOW OPENINGS GREATER THAN 48" PER TABLE 2.
3. ALL FOOTERS WILL BE POURED CONCRETE. ALL SINGLE STACKED PIERS WILL HAVE A MINIMUM FOOTER THICKNESS OF 8 INCHES with footer depth extending below frost depth using 3,000 PSI minimum concrete (table 12)
4. THIS PIER LAYOUT HAS BEEN DERIVED USING PE SEALED & DAPIA APPROVED INSTALLATION MANUAL AS OUTLINED ABOVE. PLEASE SEE INSTALLATION MANUAL FOR PE SEAL AND DAPIA APPROVAL. (Reference to Clayton Homes DAPIA approved Installation manual) [Reference to Federal Statutes 24 CFR Part 3280, 3285 or 3286]

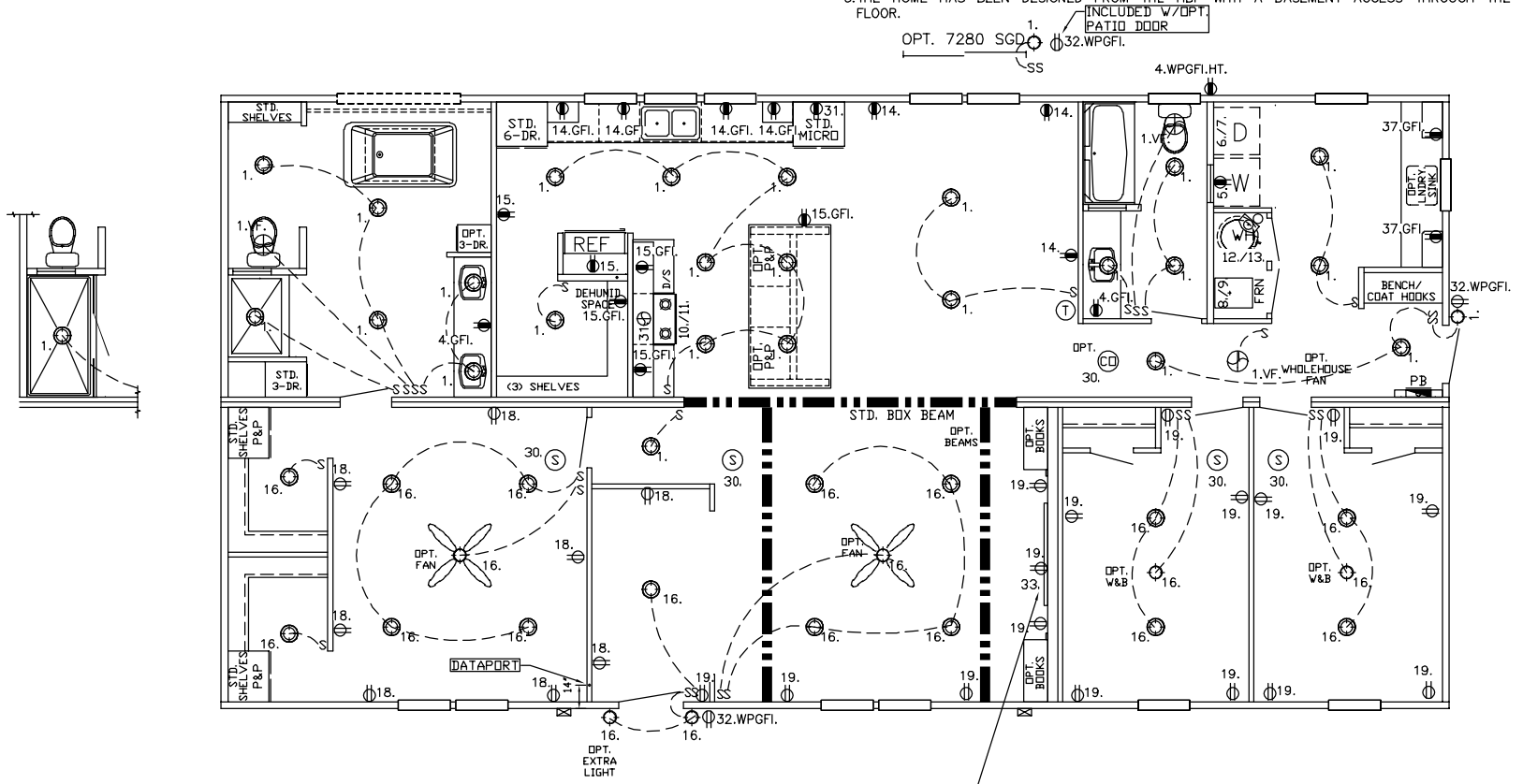


02/17/2026  
12:40PM

ALL CAN LIGHTS ABOVE TUBS/SHWRS ARE  
GASKETED AND LISTED FOR WET AREAS

CARBON MONOXIDE (CO) ALARMS ARE ONLY REQUIRED WHEN ONE OR MORE OF THE FOLLOWING ARE PROVIDED BY THE HOME BUILDING FACILITY (HBF):

1. THE HOME IS EQUIPPED WITH A FUEL BURNING APPLIANCE INSTALLED AT THE HBF.
2. THE HOME HAS BEEN DESIGNED FROM THE HBF FOR AN ATTACHED GARAGE ADDITION.
3. THE HOME HAS BEEN DESIGNED FROM THE HBF WITH A BASEMENT ACCESS THROUGH THE FLOOR.



SEE DETAIL  
REQUIRES DEDICATED CIRCUIT  
< 20 AMP BREAKER  
SINGLE RECP., NO DUPLEX)

941-32.VIS32603C.2

REF. 1HBG-EL-2.11 FOR NOTES & CIRCUITS  
● = RECP. = 20AMP CIRCUIT = 12-2 WIRE (CIRCUITS BELOW)  
CIRCUIT 37.

C:\ACADDBL-HUD-2025\VIS32603C.dwg  
**SOUTHERN HOMES**  
MODEL VIS32603C-60-3/32X60

