

ClaytonGO: Foundation Plan Summary

Order Number: **N/A**
 Model Number: **941-VIS32603C**
 Home Building Facility: **941**

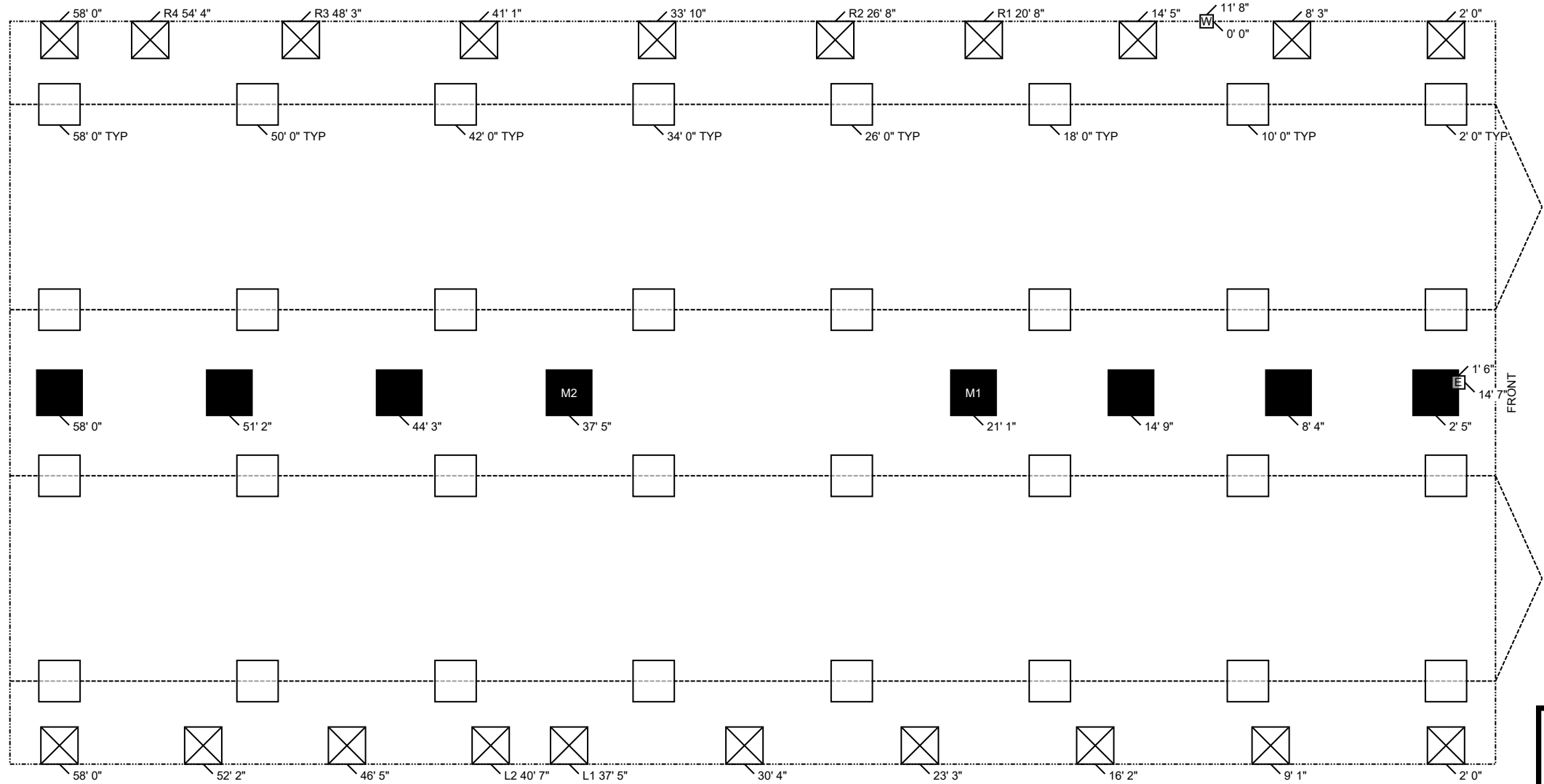
Home Width: **30 FT 0 IN**
 Home Length: **60 FT 0 IN**
 Outrigger Length (O.R.): **40.25 IN**
 Chassis Spacing: **99.5 IN**

Roof Load: **20 PSF**
 Soil Bearing Cap: **1500 PSF**
 Min. I-Beam Size: **10 IN**
 Calculated Eave/Overhang: **12 IN**

Use this QR Code to access DAPIA approved tables referenced within this design. Hover your iPhone camera over the code. For Android and other devices, download a QR Code reader.
Questions? Email sitecompletionq&a@claytonhomes.com



<p> TABLE 1: FRAME PIERS</p> <p>Pier Spacing TYP. 8 FT 0 IN MAX. 8 FT 0 IN (Table 9)</p> <p>Pier Configuration Single stacked Single stacked</p> <p>Footer Size 20 IN x 20 IN x 6 IN 20 IN x 20 IN x 6 IN</p>	<p> TABLE 2: EXTERIOR PIERS</p> <p>Pier ID L1, L2 R1, R2, R3, R4 (Table 9)</p> <p>Pier Configuration Single stacked Single stacked</p> <p>Footer Size 18 IN x 18 IN x 6 IN 18 IN x 18 IN x 6 IN</p>	<p> TABLE 3: MARRIAGE WALL PIERS</p> <p>Pier ID M1, M2, P@8'oc (Table 6)</p> <p>Pier Configuration Single stacked</p> <p>Footer Size 22 IN x 22 IN x 7 IN</p>
---	---	---



ClaytonGO: Foundation Plan Summary

Order Number: **N/A**
Model Number: **941-VIS32603C**
Home Building Facility: **941**

Home Width: **30 FT 0 IN**
Home Length: **60 FT 0 IN**
Outrigger Length (O.R.): **40.25 IN**
Chassis Spacing: **99.5 IN**

Roof Load: **20 PSF**
Soil Bearing Cap: **1500 PSF**
Min. I-Beam Size: **10 IN**
Calculated Eave/Overhang: **12 IN**

Use this QR Code to access DAPIA approved tables referenced within this design. Hover your iPhone camera over the code. For Android and other devices, download a QR Code reader. **Questions? Email sitecompletionq&a@claytonhomes.com**



UTILITIES		LOCATION	
ID	UTILITY	LEFT	DOWN
E	Elec Entrance	1 FT 6 IN	14 FT 7 IN
W	Water Inlet	11 FT 8 IN	0 FT 0 IN

NOTES:

1. FROST PROTECTION WILL BE PROVIDED BY PLACING FOOTERS BELOW FROST DEPTH OF 36 INCHES PER (FIGURE 5A) OR FROM LAHJ. Frost depth for interior footers may be taken as half with R5 skirting per (Table 5) [3285.312(b)]
2. PLACE SUPPORTS AT ALL EXTERIOR OPENINGS & PERIMETER BLOCK ALONG EXTERIOR SIDEWALLS (P), AT 96 INCH ON CENTER. & ALONG MARRIAGE WALL(S) AT 96 INCHES ON CENTER.
3. ALL FOOTERS WILL BE POURED CONCRETE. ALL SINGLE STACKED PIERS WILL HAVE A MINIMUM FOOTER THICKNESS OF 7 INCHES with footer depth extending below frost depth using 3,000 PSI minimum concrete (table 12)
4. THIS PIER LAYOUT HAS BEEN DERIVED USING PE SEALED & DAPIA APPROVED INSTALLATION MANUAL AS OUTLINED ABOVE. PLEASE SEE INSTALLATION MANUAL FOR PE SEAL AND DAPIA APPROVAL. (Reference to Clayton Homes DAPIA approved Installation manual) [Reference to Federal Statutes 24 CFR Part 3280, 3285 or 3286]

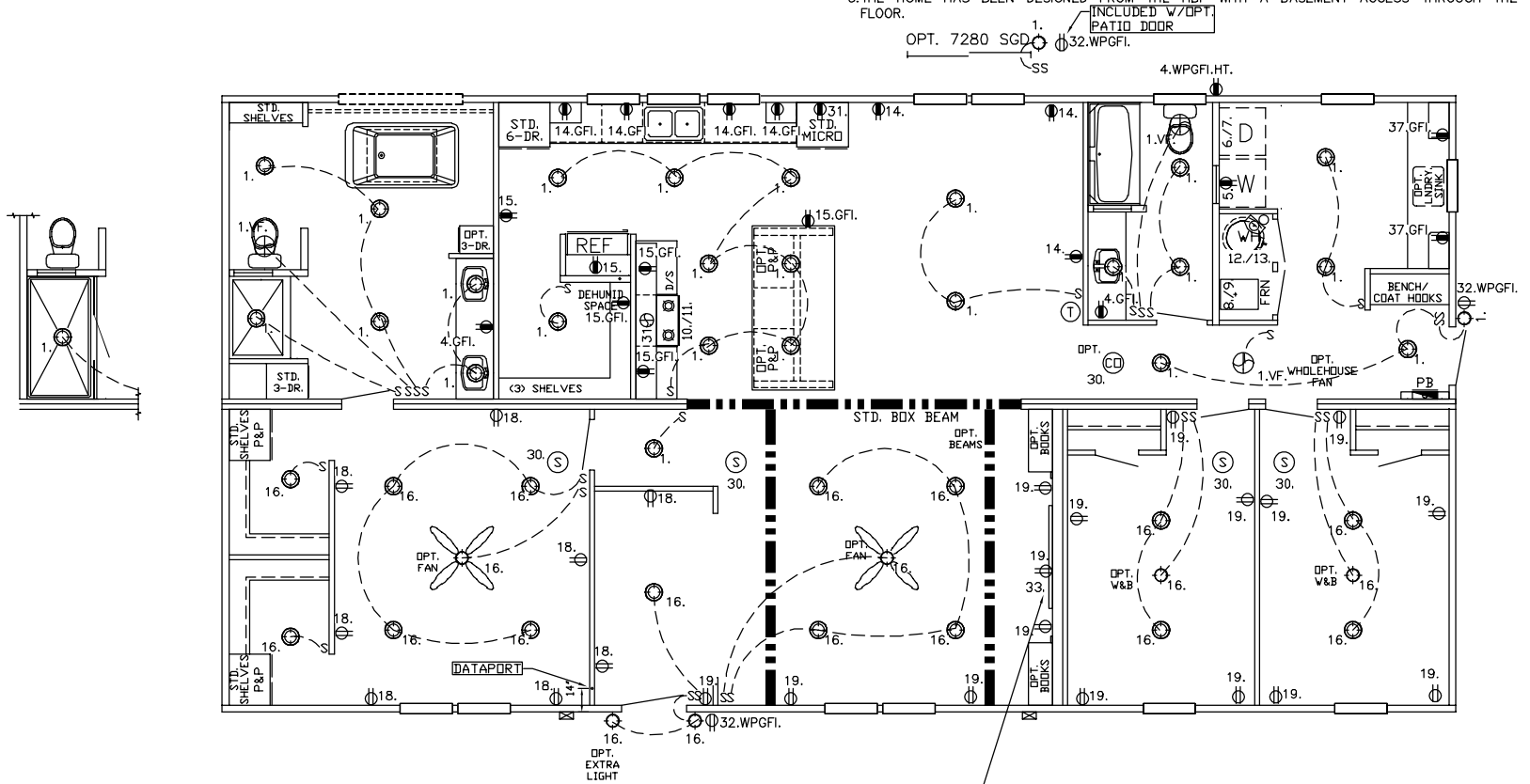


02/17/2026
12:40PM

ALL CAN LIGHTS ABOVE TUBS/SHWRS ARE
GASKETED AND LISTED FOR WET AREAS

CARBON MONOXIDE (CO) ALARMS ARE ONLY REQUIRED WHEN ONE OR MORE OF THE FOLLOWING ARE PROVIDED BY THE HOME BUILDING FACILITY (HBF):

1. THE HOME IS EQUIPPED WITH A FUEL BURNING APPLIANCE INSTALLED AT THE HBF.
2. THE HOME HAS BEEN DESIGNED FROM THE HBF FOR AN ATTACHED GARAGE ADDITION.
3. THE HOME HAS BEEN DESIGNED FROM THE HBF WITH A BASEMENT ACCESS THROUGH THE FLOOR.



SEE DETAIL
REQUIRES DEDICATED CIRCUIT
< 20 AMP BREAKER
SINGLE RECP, NO DUPLEX>

941-32.VIS32603C.2

REF. 1HBG-EL-2.11 FOR NOTES & CIRCUITS

● = RECP. = 20AMP CIRCUIT = 12-2 WIRE (CIRCUITS BELOW)
CIRCUIT 37.

C:\ACADDBL-HUD-2025\VIS32603C.dwg

SOUTHERN HOMES
MODEL VIS32603C-60-3/32X60

